

Model 26 Rollaway



Manual for:

Installation • Operation • Maintenance

TRION®

SPECIFICATIONS

Pick-up Velocity: 2500 FPM

Duct Velocity: 3200 FPM

Power Requirements: 1 HP, 115 VAC, 1 Phase, 60 Hz, 14.0 Amps, 1175 Watts
1 HP, 220 VAC, 1 Phase, 50 Hz, 7.2 Amps, 980 Watts

Cabinet Dimensions: 3" tall x 27" wide x 38" long

Weight: 348 lbs.

FILTERS

Pre-Filter

Aluminum Mesh Std.
2" Pleated - Opt.
4" Pleated - Opt.

Main Filters

95% Micro-Glass Bag (90 sq. ft.)

Options:

65% Micro-Glass Bag (90 sq. ft.)
95% Micro-Glass Bag (60 sq. ft.)
with absorbent module or HEPA Filter (High Efficiency Particulate Air Filter)
Texwood Bag (cleanable)

PRINCIPLES OF OPERATION

The Model 26 consists of five basic components:

- 1) A cabinet for housing all components
- 2) A blower for moving the air
- 3) Electrical wiring
- 4) Collecting components
- 5) A source collection, self-supporting arm with hood.

The air in any room contains millions of particles of dust. The composition of the dust will vary depending on the environment. The dust may be in the form of smoke, airborne dirt from outside, small particles of grease or moisture. The size of the particles (or particulate) will range from as little as .03 micron to anything large enough to remain airborne in the air. (A micron is one millionth of a meter.)

When the unit is turned on, the blower begins moving the air through the pre-filter section. The pre-filter collects the large dust and lint particles. The air then enters the main filter where the dust or smoke is trapped in the millions of fibers of the bag. The cleaned air then passes through the unit and back into the room.

NEW UNIT INSPECTION

Immediately upon receiving the unit, carefully examine the carton for damage during transit. If unit is damaged, contact

the last carrier for filing claim or contact your Trion Distributor.

While uncartoning the unit, look for concealed shipping damage. If there is damage, it should be reported to the last carrier for filing claim or contact your Trion Distributor.

PREPARATION AND INSTALLATION

This manual should be carefully read before starting the preparation and installation of the air cleaner.

The installation should conform to all local ordinances associated with building codes and electrical codes required for the unit. Authorities having jurisdiction should be consulted before installation is made. If there are no local codes, the installation should conform to the National Electrical Code.

For maximum air cleaning efficiency, your air cleaner should be located as specified by your Trion Distributor.

NOTE: REMOVE THE CLEANING COMPONENTS FROM THE CABINET FOR MORE EASE IN HANDLING.

WIRING

The Trion Air Cleaner is equipped with a power cord for connection to any 115 VAC, 20 amp circuit.

INSTALLATION OF ARM

Mounting holes are furnished in TRION equipment to which fume extractor arms are designed to be mounted.

Mount the arm over the bolt circle using the 1/4-20 bolts, nuts and washers furnished. Three of the bolts have been installed at the factory to fasten the swivel joint together during transit. It will usually not be necessary to remove the bolt retainers used on these bolts prior to arm installation. Two longer bolts are furnished on some arms which are used to mount the arm to certain TRION equipment where two longer bolts are required to extend thru internal cabinet reinforcement. Some TRION equipment is furnished with nuts for arm mounting bolts welded into place; hex nuts furnished with arms will not be required for these units. Refer to arm and accessories (145498-001) for further detail.

CAUTION: ALWAYS TURN THE UNIT OFF BEFORE WORKING ON OR NEAR THE MOTOR OR ITS WIRING ASSEMBLY. IF THE POWER DISCONNECT POINT IS OUT OF SIGHT, LOCK IT IN THE OPEN POSITION AND TAG TO PREVENT UNEXPECTED APPLICATION OF POWER.

The air cleaning components consist of a pre-filter and main filter.

The pre-filter and main filter are accessible through the access door allowing simple, fast replacement.

Filters are changed according to the pressure across the filter. An optional pressure (magnahelic) gauge and static pressure taps are available from your Trion Distributor. A U-tube or slant gauge with a range of 0-2" water column can also be used to read filter pressure. Install a pressure tap in the unit before and after the bag. Connect these taps to the pressure gauge.

Hi and Lo connections parts: A negative reading indicates that the taps are reversed at the gauge and should be swapped. Proper readings are as found below in the chart:

MAIN FILTER	CLEAN FILTER	RECOMMENDED FINAL
95%	.63	1.63
65%	.51	1.51

NOTE: These readings will vary slightly due to altitude and temperature.

Approximately 20% air flow reduction

Upon installation of the unit, note the initial pressure reading. Once the reading is 1 inch above the initial reading, the main filter should be changed.

When the pressure reading decreases from the initial reading, then remove and clean the aluminum mesh pre-filter, and install back into the unit. Note the pressure reading at this time. If the pressure again decreases from this point, it is again time to clean the mesh pre-filter.

Once a pattern has been established, the pre-filters can be cleaned or replaced on a calendar basis with the main filter replaced when the gauge reads as "Recommended Final" in the table.

NOTE: THE UNIT CAN CONTINUE TO RUN BEYOND THE 1.0 PRESSURE DIFFERENCE READING; HOWEVER, AIR FLOW WILL BE REDUCED FURTHER.

CAUTION: TO CHECK INTERNAL COMPONENTS, TURN POWER TO UNIT OFF.

Hepa Filter: A diminished air flow signals that the Hepa Filter is dirty.

THE HEPA FILTER CANNOT BE CLEANED.

See your Trion Distributor for all replacement filters.

Remove power to the unit. Open the door of the air cleaner. Observe the orientation of the filter and the air flow indicator. Grasp the Hepa filter and pull toward you.

NOTE: THE HEPA FILTER WEIGHS 35 LBS. CLEAN. EXERCISE CAUTION.

Install the replacement filter in the same configuration as the one being replaced. Close the door and restore power to the unit; the air flow should return to normal.

Alumina/Charcoal Module

The alumina/charcoal module needs changing when unpleasant odors are again noticed in the room.

Remove power to the unit. Open the door of the air cleaner. Remove the two absorption modules by sliding them toward you.

NOTE: THE ALUMINA/CHARCOAL MODULE WEIGH 20 LBS. EXERCISE CAUTION.

Place the module on the floor. Remove the cover plate. Empty the used alumina or charcoal from the module.

Again place the module on the floor as above, and fill with alumina or charcoal.

IMPORTANT: SHAKE MODULE TO PACK MEDIA TIGHTLY.

Replace the cover plate and re-install modules in the unit. Close the door and restore power; the air flow should return to normal.

CLEANING & INSPECTION OF CABINET

After the dirty components have been removed, an inspection of the cabinet should be made. Remove all foreign debris and dirt accumulation inside the cabinet. Check for dirt accumulation on the blower wheel blades, and clean if there is a buildup. Inspect all wiring for loose connections and cracked insulation.

Bearing of both blower and blower motor should be checked for signs of unusual wear.

Rubber gasketing should be checked twice a year. Aging occurs primarily due to ozone present in ambient air and eventually hardens the rubber and causes cracking and loss of seal. Contact your TRION Distributor for replacement.

TROUBLESHOOTING

All TRION Air Cleaners are manufactured to give the user continued, trouble-free service. However, as with all mechani-

cal equipment, breakdowns do occur.

The following chart will enable the user to pinpoint the cause of most problems. Then refer to the "Parts Ordering Information" section for replacement parts.

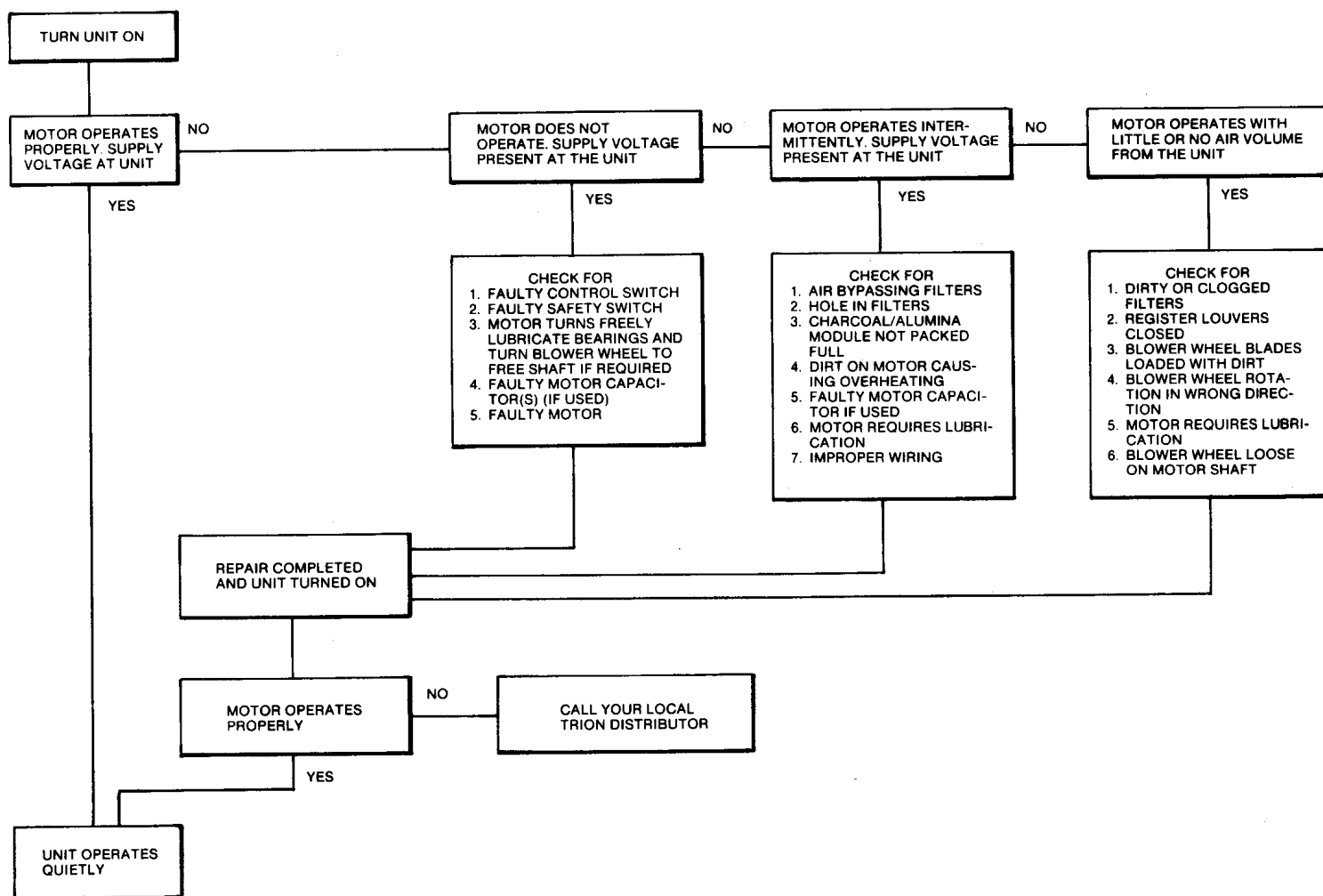
Before troubleshooting the unit, refer to the Wiring Diagram. Check for proper wiring connections and the input line voltage.

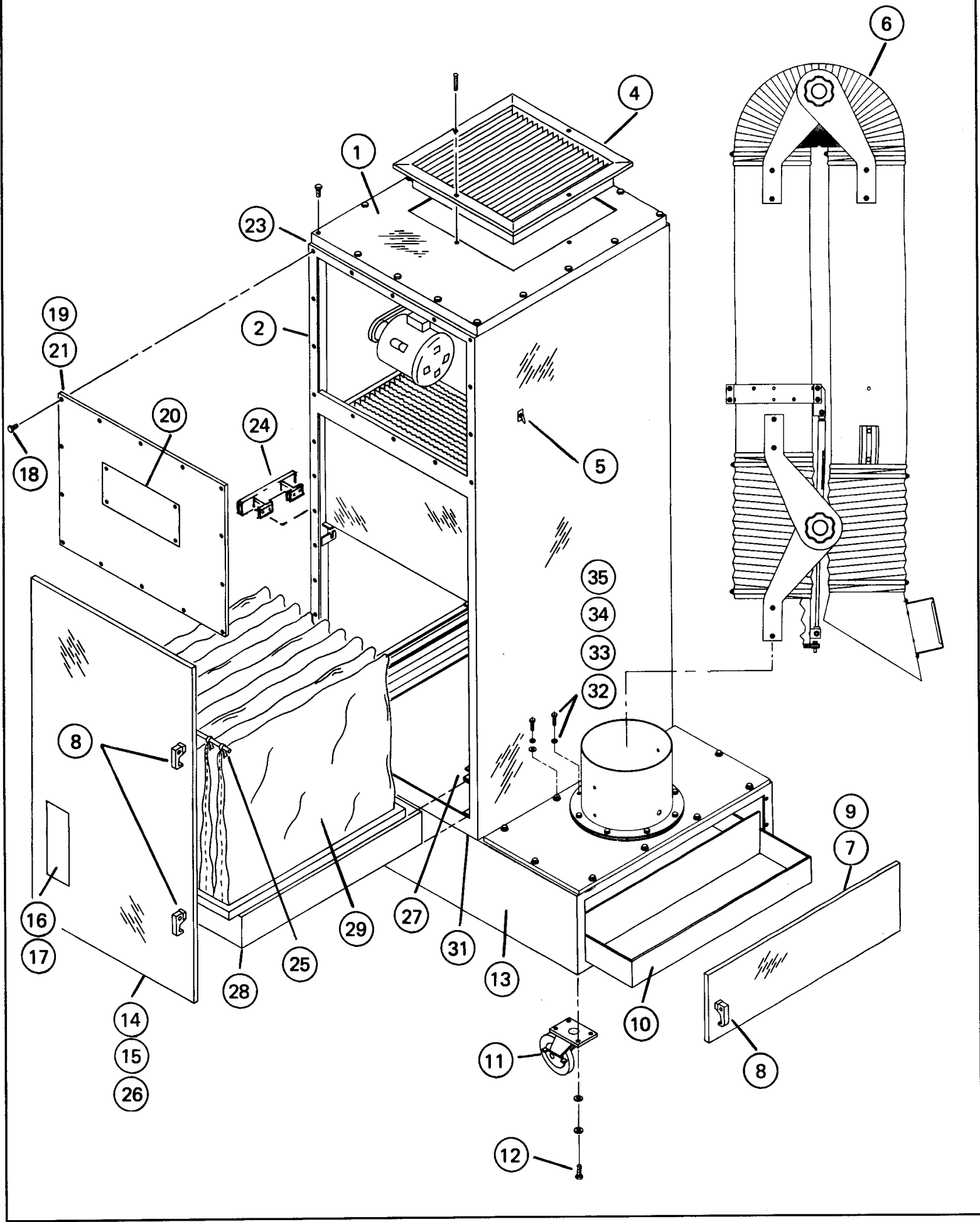
To order repair parts, contact your local TRION Distributor.

The following information will be required for prompt delivery of repair parts:

	Located
1. Unit Model Number	ID Plate Inside Door
2. Unit Serial Number	ID Plate Inside Door
3. Part Number and Description	Exploded Views
Give item part number from Exploded View whenever possible.	

TROUBLESHOOTING PROCEDURE





M-26 UNIT ASSEMBLY

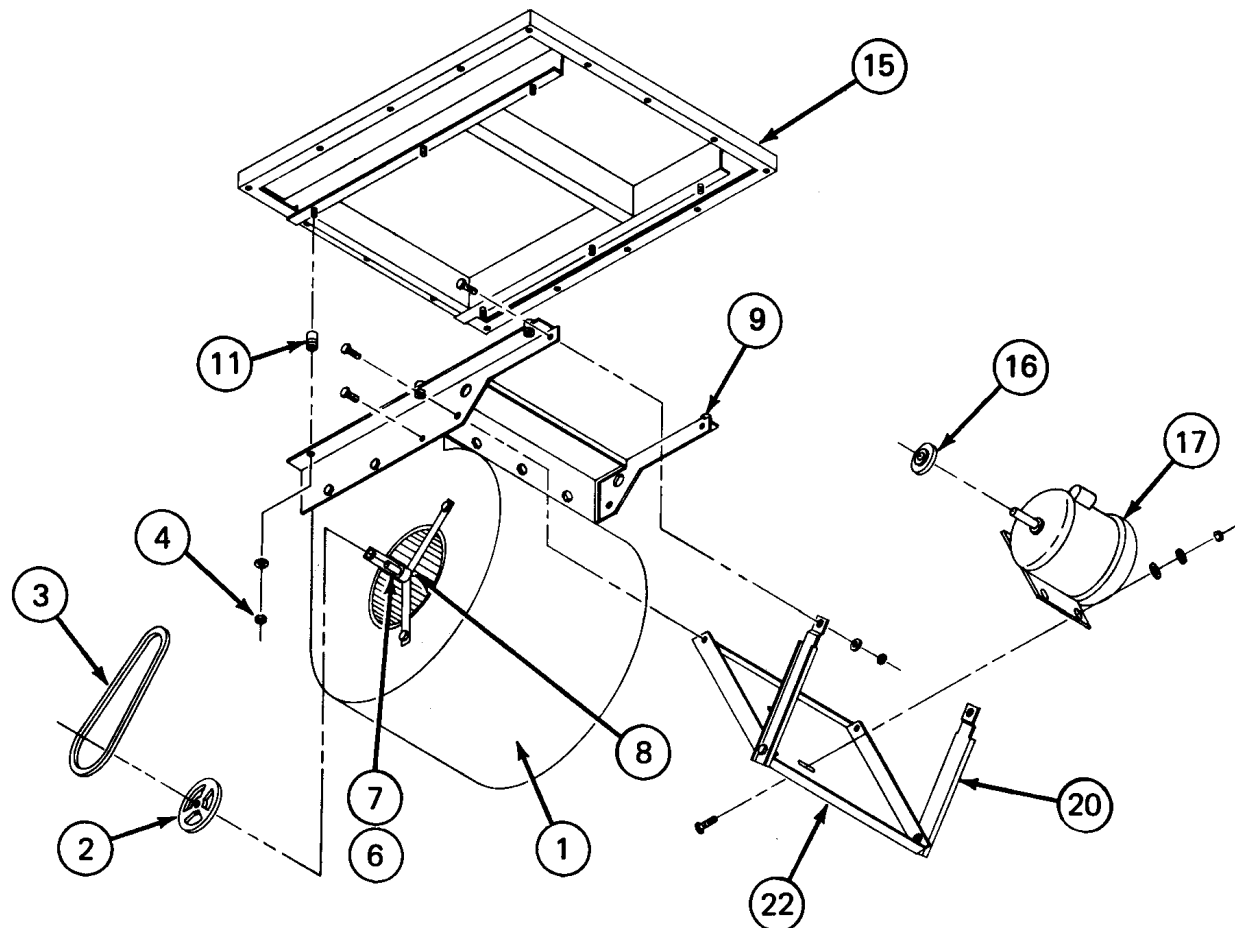
<u>Item</u>	<u>Part Number</u>	<u>Description</u>
1	4-26-1200-00	Blower and Motor Assy.
2	26-9041-00	Cabinet, Welded
3	137668-001	Pressure Gage Kit (Appx. Loc) – Opt.
4	69000-0003-0500	Diffuser
5	137441-001	On-Off Switch
6	445500-001	Pickup Arm Assembly
7	4-26-9024-00	Door, Cart
8	334562-003	Handle, Lift & Turn
9	224779-020	Gasket 5/8 x 5/8 – 10'
10	26-9020-00	Tray
11	60000-0003-0100	Swivel Caster
12	220003-187	Screw
13	26-9000-00	Cart
14	4-26-9025-00	Door, Filter Area
15	224779-020	Gasket 5/8 x 5/8 – 12'
16	21-0000-03	Nameplate "Rollaway"
17	61000-0001-06	Retaining Clip
18	222005-025	Screw
19	26-9022-00	Front Panel
20	236936-001	Nameplate "Tepco"
21	224779-020	Gasket 5/8 x 5/8 – 8'
22	1-2500-1000-0503	Power Cable (Not Shown)
23	224779-026	Gasket 1/2 x 1/16 – 8'
24	1-21-9060-0001	Cabinet Handle, Large
25	26-9046-00	Bag Support Rod
26	224779-027	Gasket 3/8 x 1/4 – 9'
27	26-9070-00	Impinger Rail
28	224451-015	Prefilter, 2" Al Mesh – Std.
28A	2000-8003-00	Impinger – Opt.
28B	237643-001	Polyester Prefilter – Opt.
28C	69000-001-97	4" Pleated Prefilter – Opt.
28D	69000-0001-99	2" Pleated Prefilter – Opt.
29	26-3000-9931	Air Filter Bag, 95% – Std.
29A	26-3000-6931	Air Filter Bag, 65% – Opt.
29B	26-3000-9917	Air Filter Bag, 95%, Short – Opt.
29C	26-3002-0001	Texwood Bag (Cleanable) – Opt.
30	26-8001-00	Absorber Module (2 Per Unit) – Opt.
30A	69000-0001-30	HEPA Filter, 95% – Opt.
30B	69000-0001-71	HEPA Filter, 99-97 – Opt.
31	224779-003	Gasket – 13'
32	220008-189	Screw, Hex HD
33	120033-008	Nut, Hex
34	120033-009	Lockwasher
35	237657-001	Spacer Strut (Not Shown)
36	224779-020	Gasket 5/8 x 5/8 (Not Shown) 2'

*See Blower/Motor Breakdown for specific parts

1. EACH Absorber requires:

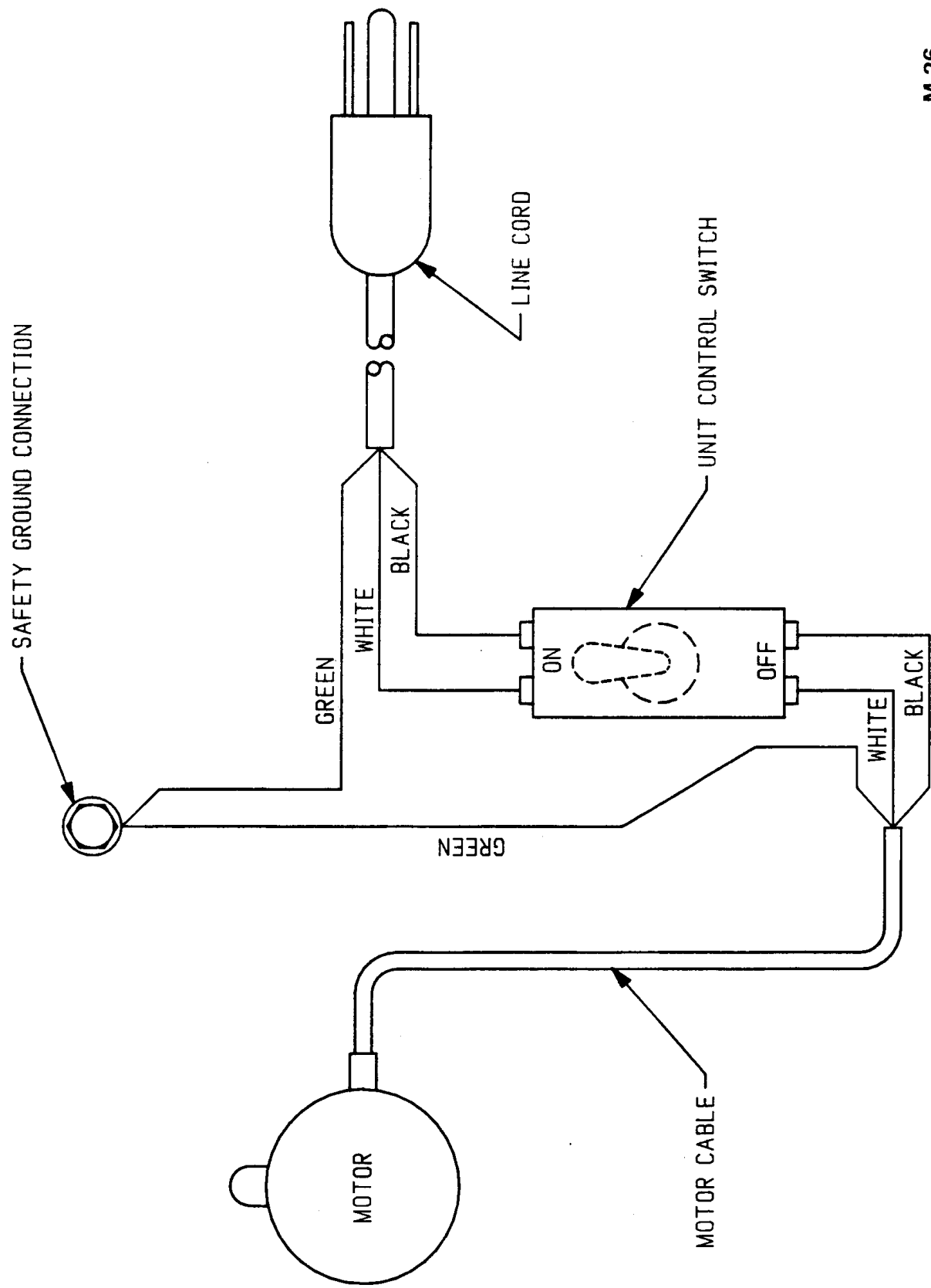
20 lbs. charcoal or 30 lbs. alumina or a mixture of
10 lbs. charcoal and 15 lbs. alumina.

2. HEPA are high efficiency particulate air filter modules,
either 95% or 99.97% efficiency.



M-26 BLOWER/MOTOR ASSEMBLY

<u>Item</u>	<u>Part Number</u>	<u>Description</u>
1	62000-0012-07	Blower Assy. w/Shaft
2	124053-038	Blower Pulley
3	220926-023	Belt
4	123149-001	Stop Nut
5	120031-011	Flat Washer
6	1-1250-1200-07	Square Key
7	62000-0004-04	Shaft, Blower
8	62000-0003-01	Bearing w/insulator
9	437696-001	Mounting Bracket, Motor-Blower
10	222005-056	Hex Bolt, Washer Head
11	62000-0011-02	Grommett
12	221235-341	Hex Screw
13	120033-010	Lockwasher
14	123149-004	Elastic Stop Nut
15	437682-001	Outlet Panel Assy.
16	125699-003	Motor Pulley
17	125740-003	Motor, 115V/60Hz, 1HP
18	120031-012	Flat Washer
19	120036-010	Hex Nut
20	337701-001	Rocker Arm
21	94100-3118-1001	Carriage Bolt
22	337700-001	Motor Bracket



M-26
WIRING DIAGRAM