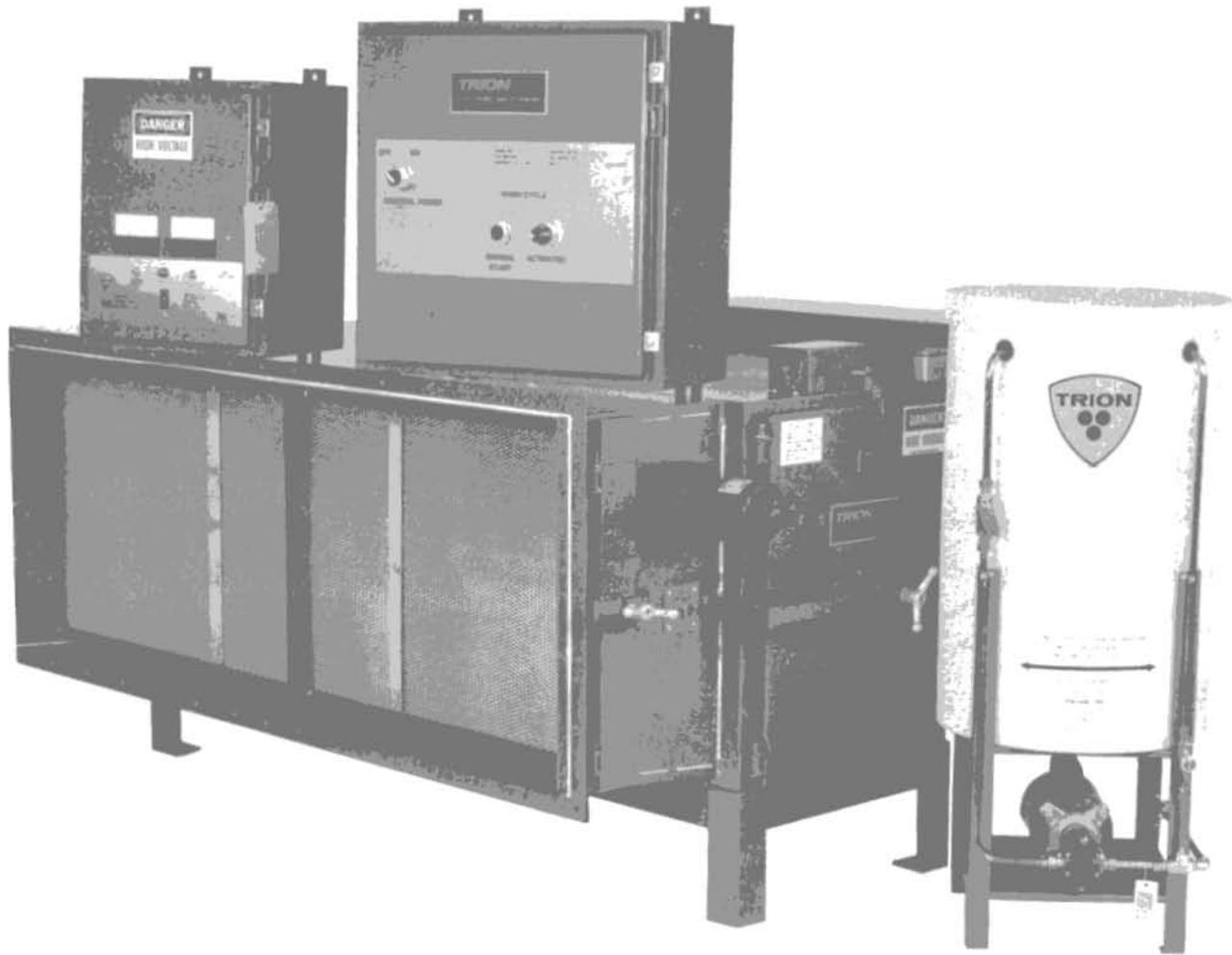


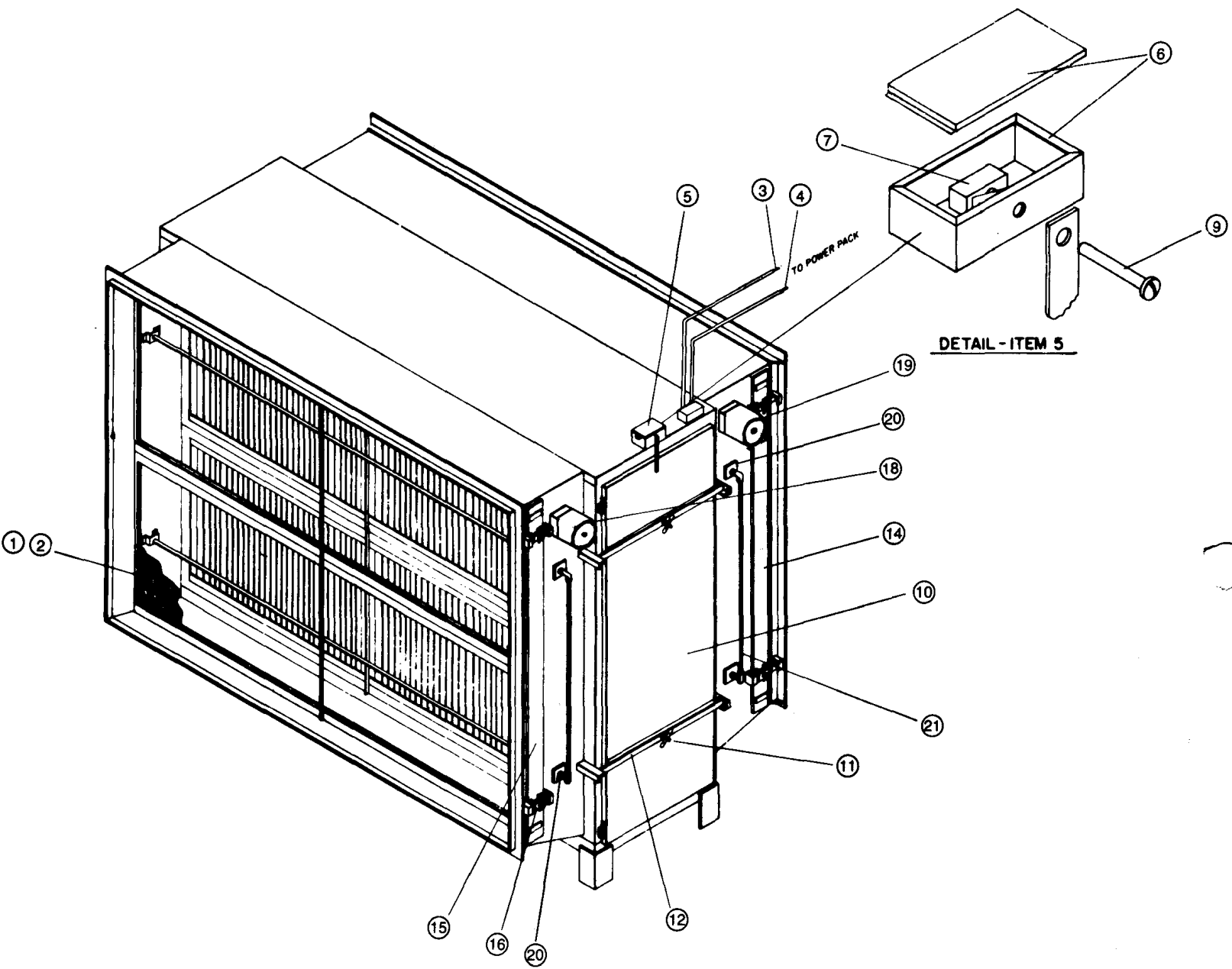
# Model 71 Series

## Parts List



Engineered Products  
Custom Packaged Equipment

**TRION**<sup>®</sup>



CABINET

427100-124

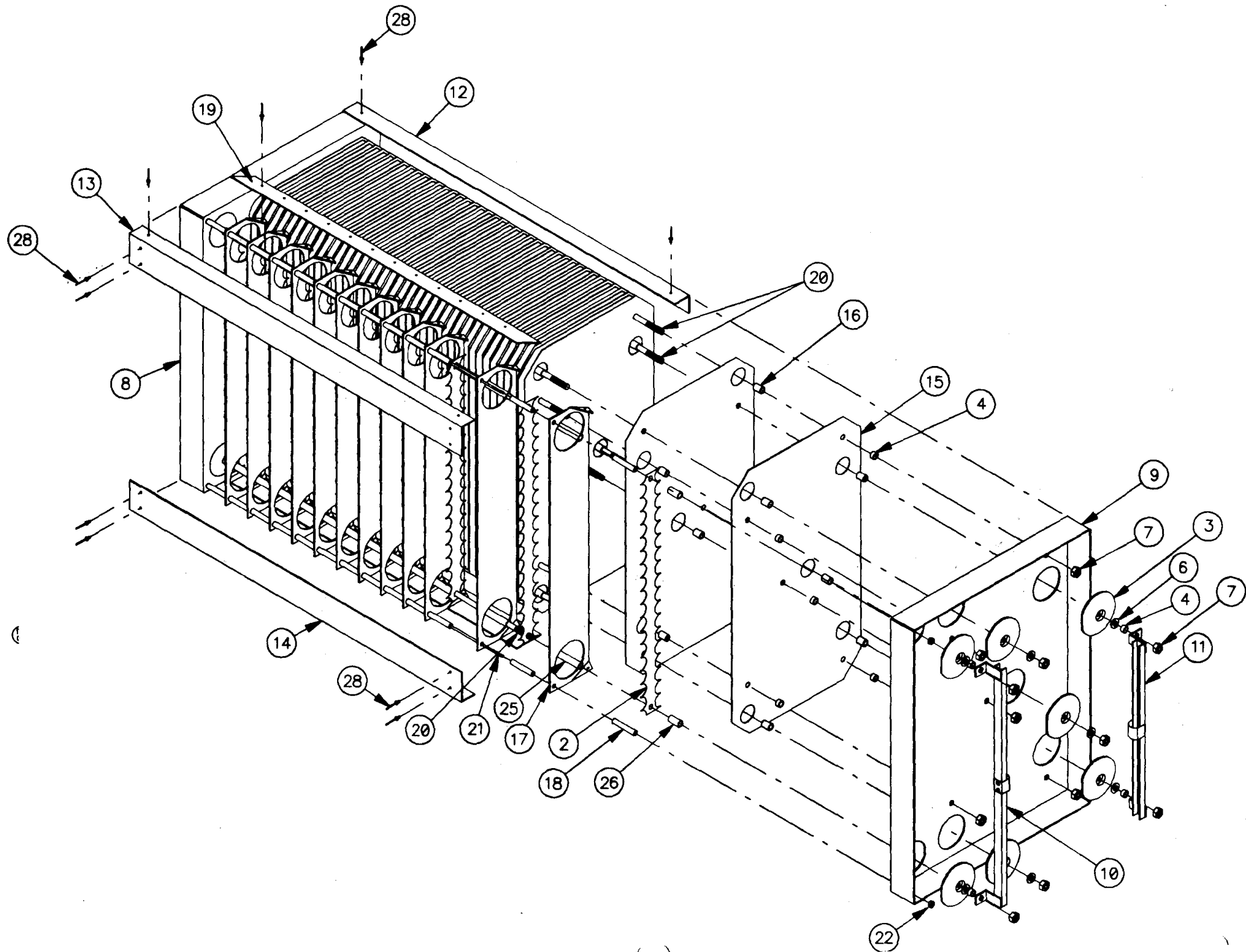
CABINET

KEY	PART NUMBER	PART DESCRIPTION	QTY./UNIT
1	322031-001	Pre & After Metal Mesh Filter for Unit <u>Models Ending in -01, -02, -03 &amp; -04</u>	
1	322031-002	Dimensions: 16 <sup>9</sup> / <sub>16</sub> " X 23" X 1 <sup>5</sup> / <sub>16</sub> " Dimensions: 21 <sup>7</sup> / <sub>8</sub> " X 23" X 1 <sup>5</sup> / <sub>16</sub> "	
		Quantity of Mesh Filter Per Unit	
		<u>Unit Model No.</u>	<u>322031-001</u> <u>322031-002</u>
		71-102-XX	2
		71-103-XX	4
		71-104-XX	4
		71-105-XX	2
		71-106-XX	6
		71-107-XX	4
		71-108-XX	8
		71-109-XX	6
		71-203-XX	8
		71-204-XX	8
		71-205-XX	4
		71-206-XX	12
		71-207-XX	8
		71-208-XX	16
		71-209-XX	12
		71-303-XX	12
		71-304-XX	12
		71-305-XX	6
		71-306-XX	18
		71-307-XX	12
		71-308-XX	24
		71-309-XX	18
2	225822-002	Pre & After Perforated Plate for Unit <u>Models Ending in -01, -02, -03 &amp; -04</u>	
2	225822-003	Dimensions (40% OPEN) 21 <sup>13</sup> / <sub>16</sub> " X 22 <sup>15</sup> / <sub>16</sub> " X 7 <sup>7</sup> / <sub>8</sub> " Dimensions (40% OPEN) 33 <sup>1</sup> / <sub>16</sub> " X 22 <sup>15</sup> / <sub>16</sub> " X 7 <sup>7</sup> / <sub>8</sub> "	
		Quantity of Perforated Plate Per Unit	
		<u>Unit Model No.</u>	<u>225822-002</u> <u>225822-003</u>
		71-102-XX	2
		71-103-XX	2
		71-104-XX	4
		71-105-XX	2
		71-106-XX	4
		71-107-XX	4
		71-108-XX	2
		71-109-XX	6
		71-203-XX	4
		71-204-XX	8
		71-205-XX	4
		71-206-XX	8
		71-207-XX	4
		71-208-XX	8
		71-209-XX	12
		71-303-XX	6
		71-304-XX	12
		71-305-XX	6
		71-306-XX	12
		71-307-XX	6
		71-308-XX	12
		71-309-XX	18

**CABINET CONTINUED**

KEY	PART NUMBER	PART DESCRIPTION	QTY./UNIT
3	121117-003	High Voltage Cable, Blue, (Per Foot)	As Req.
4	121117-001	High Voltage Cable, Black, (Per Foot)	As Req.
5	335485-001	Access Door Electrical Interlock Assembly (Includes Items 6 Thru 8)	1
6	335472-001	Electrical Interlock Box	1
7	235484-001	Electrical Interlock Switch	1
8	121115-001	Insulation (Not Shown)	2
9	235448-003	Access Door Interlock Screw Assembly	1
10		Access Door Assemblies (Assemblies Include Items 11 Thru 13)	
	327131-001	71-102-XX Thru 71-109-XX	1
	327131-002	71-203-XX Thru 71-209-XX	1
	327131-003	71-303-XX Thru 71-309-XX	1
11	126926-001	Access Door Handle	As Req.
12	327025-001	Access Door Angle Bar	As Req.
13	220062-155	Access Door Gasket 3/4" x 5/8" (Not Shown)	As Req.
		Filter Access Door Assemblies (Assemblies Include Items 11, 16, and 17)	
14		Filter Access Door Assemblies—Right Hand	
	327114-001	Models 71-102-XX Thru 71-109-XX	1
	327114-002	Models 71-203-XX Thru 71-209-XX	1
	327114-003	Models 71-303-XX Thru 71-309-XX	1
15		Filter Access Door Assemblies—Left Hand	
	327114-004	Models 71-102-XX Thru 71-109-XX	1
	327114-005	Models 71-203-XX Thru 71-209-XX	1
	327114-006	Models 71-303-XX Thru 71-309-XX	1
16	126921-001	Filter Access Door Latching Bar	4
17	224779-005	Filter Access Door Gasket (Not Shown)	2
18	229508-001	Manifold Drive Motor Assembly (Clockwise Rotation)	1
19	229508-002	Manifold Drive Motor Assembly (Counter Clockwise Rotation)	1
20	123576-001	Swivel Assembly 71-102-XX Thru 71-109-XX 71-203-XX Thru 71-209-XX 71-303-XX Thru 71-309-XX	2 4 6
21		Header Assembly	
	128632-001	71-203-XX Thru 71-209-XX	2
	129632-002	71-303-XX Thru 71-309-XX	2

IONIZING-COLLECTING CELL

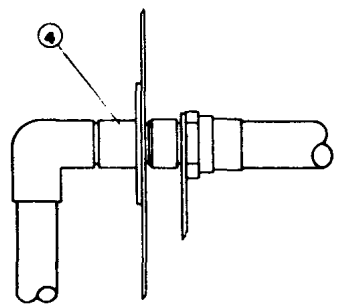


# IONIZING-COLLECTING CELL

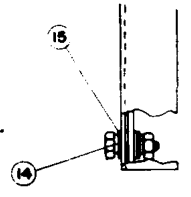
KEY	PART NUMBER	PART DESCRIPTION	QTY./CELL
1	422733-524 422733-525 422733-533 422733-534	Ionizing-Collecting Cell Assembly 2 ft. Cell Assembly, Red Insulators 3 ft. Cell Assembly, Red Insulators 2 ft. Cell Assembly, White Insulators 3 ft. Cell Assembly, White Insulators  Quantity of Cells Per Unit Unit Model No.            2 ft. Cells    3 ft. Cells 71-102-XX                    1                — 71-103-XX                    —                1 71-104-XX                    2                — 71-105-XX                    1                1 71-106-XX                    —                2 71-107-XX                    2                1 71-108-XX                    1                2 71-109-XX                    —                3 71-203-XX                    —                2 71-204-XX                    4                — 71-205-XX                    2                2 71-206-XX                    —                4 71-207-XX                    4                2 71-208-XX                    2                4 71-209-XX                    —                6 71-303-XX                    —                3 71-304-XX                    6                — 71-305-XX                    3                3 71-306-XX                    —                6 71-307-XX                    6                3 71-308-XX                    4                6 71-309-XX                    —                9	
2	340671-001	Spiked Ionizer Blade 2 ft. Cell 3 ft. Cell	8 13
3	225734-001 122732-001	<b>INSULATORS</b> Insulator (Red) — Must be used with End Spacer P.N. 225546-016 Insulator (White) — Must be used with End Spacer P.N. 225546-019 and "O" Ring P.N. 122809-001	14 14
4	225546-016 225546-019	<b>END SPACERS</b> End Spacer — Must be used with red Insulator P.N. 225734-001 End Spacer — Must be used with white Insulator P.N. 122732-001	10 10
5	122809-001	"O" Ring Not Shown — Must be used with white Insulator P.N. 122732-001 (NOT Used with Red Insulator P.N. 225734-001	14
6	120456-007	Washer, Nylon 3/8"	14
7	121800-014	Nut/Lockwasher, External Tooth, 3/8-16 End Plates	24
8	422757-001	End Plate, Right Hand	1
9	422757-002	End Plate, Left Hand	1
10	328443-006	Contact/Bracket Assembly, Ionizer	2
11	328443-007	Contact/Bracket Assembly, Collector	2
12	222758-001 222758-002	Back Braces 2 ft. Cell 3 ft. Cell	2 2
13	227316-003 227316-004	Top Front Braces 2 ft. Cell 3 ft. Cell	1 1

**IONIZING-COLLECTING CELL CONTINUED**

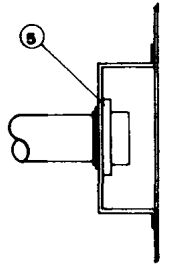
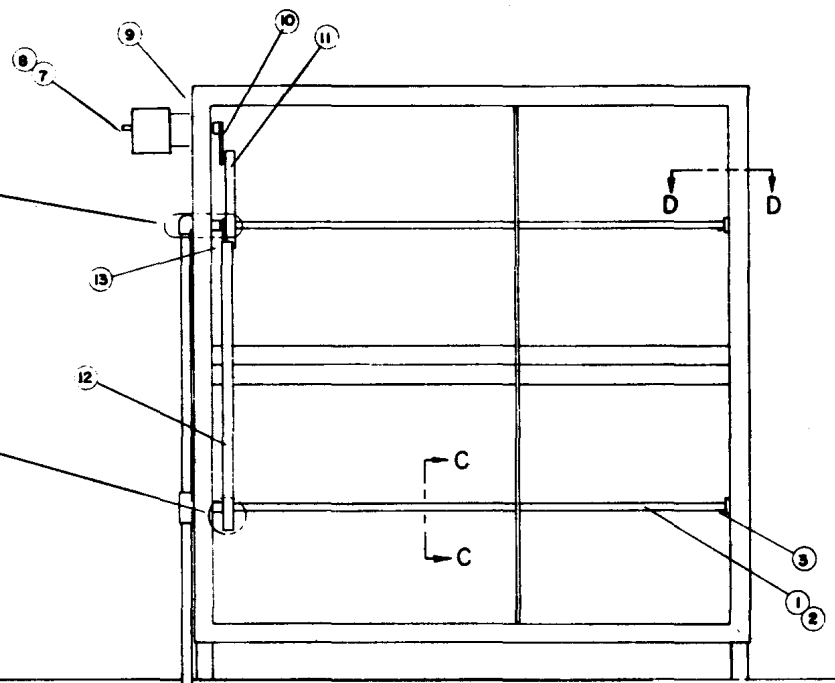
KEY	PART NUMBER	PART DESCRIPTION	QTY./CELL
14	227316-001	Bottom Front Braces 2 ft. Cell	1
	227316-002	3 ft. Cell	1
15	222780-001	Collector Plate (High Voltage & Ground) 2 ft. Cell	49
		3 ft. Cell	81
16	225546-041	Spacer — Cell Core 2 ft. Cell	245
		3 ft. Cell	405
17	222777-001	Ionizer Ground Electrode 2 ft. Cell	7
		3 ft. Cell	12
18	220107-098	Spacer — Ionizer Ground Electrode 2 ft. Cell	16
		3 ft. Cell	26
19	222772-001	Top Frame — Ionizer Ground Electrode 2 ft. Cell	2
	222772-002	3 ft. Cell	2
20		<b>TIE RODS</b>	
	222785-002	Tie Rod — Hot Plates Thru Collector Contact $\frac{3}{8}$ " 2 ft. Cell	12
	222785-004	3 ft. Cell	12
21	222794-035	Tie Rod — Ionizer Ground Electrode — $\frac{1}{4}$ " O.D. 2 ft. Cell	2
	222794-002	3 ft. Cell	2
22	121800-008	Nut/Lockwasher — External Tooth $\frac{1}{4}$ "-20	4
23	222781-048	End Spacer — Spiked Ionizer Blade (Not Shown) 2 ft. Cell	14
		3 ft. Cell	24
24	222781-049	End Spacer — Spiked Ionizer Blade (Not Shown)	4
25	222781-048	Spacer - $\frac{1}{2}$ " O.D. x .049" x 2.184" 2 ft/ Cell	14
		3 ft. Cell	24
26	222781-049	Spacer - $\frac{1}{2}$ " O.D. x .049" x .990"	



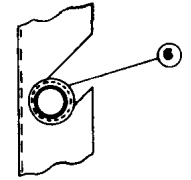
DETAIL A



DETAIL B

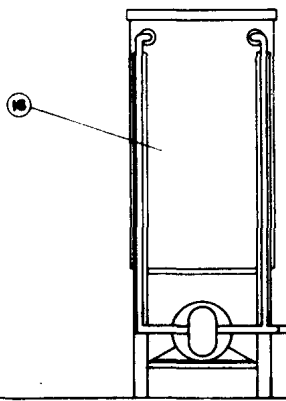


SECTION D-D



SECTION C-C

PRESSURE GAUGE AND SHUT-OFF VALVE  
NOT SUPPLIED BY TRION

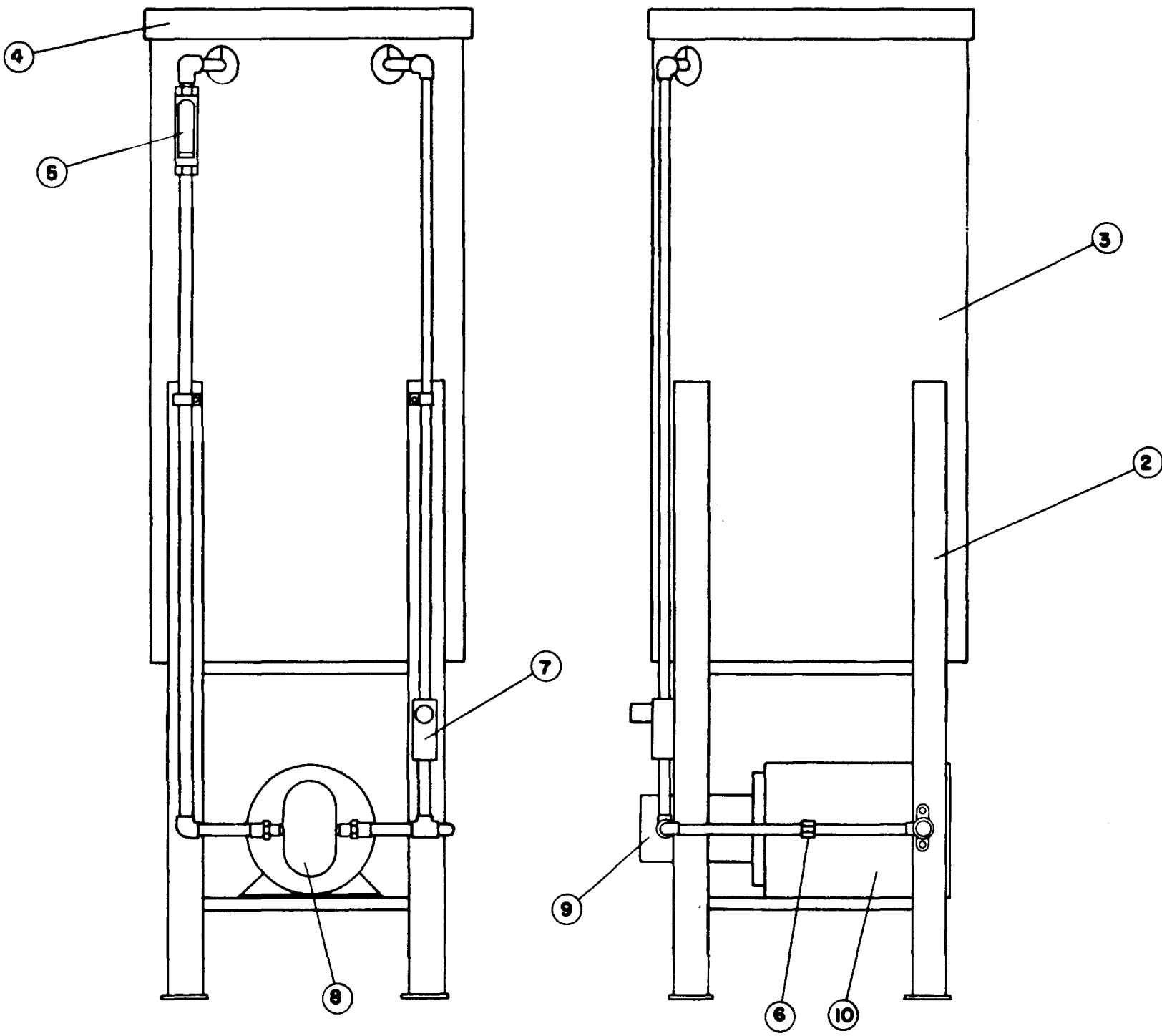


# WATERWASH SYSTEM

KEY	PART NUMBER	PART DESCRIPTION	QTY./UNIT
1		Manifold Assembly	
	325963-001	71-102-02 & -04	2
	326963-002	71-103-02 & -04	2
	326963-003	71-104-02 & -04	2
	326963-004	71-105-02 & -04	2
	326963-005	71-106-02 & -04	2
	326963-006	71-107-02 & -04	2
	326963-007	71-108-02 & -04	2
	326963-008	71-109-02 & -04	2
	326963-002	71-203-02 & -04	4
	326963-003	71-204-02 & -04	4
	326963-004	71-205-02 & -04	4
	326963-005	71-206-02 & -04	4
	326963-006	71-207-02 & -04	4
	326963-007	71-208-02 & -04	4
	326963-008	71-209-02 & -04	4
	326963-002	71-303-02 & -04	6
	326963-003	71-304-02 & -04	6
	326963-004	71-305-02 & -04	6
	326963-005	71-306-02 & -04	6
326963-006	71-307-02 & -04	6	
326963-007	71-308-02 & -04	6	
326963-008	71-309-02 & -04	6	
2	221072-002	Spray Nozzle	
		Manifold On	
		QTY/MANIFOLD	↑
		326963-001	4
		326963-002	6
		326963-003	8
		326963-004	10
		326963-005	12
		326963-006	14
		326963-007	16
	326963-008	18	
3	130124-001	Pipe Plug, Nylon	
		Qty. 2 per Manifold	↑
4	123576-001	Swivel Assy.	
		Qty. 1 Per Manifold	↑
5	220105-045	Manifold Bushing, Idler End	
		Qty. 1 Per Manifold	↑
6	125366-001	Manifold Bushing, Center Support	
		Used Only on Models Listed:	↑
		71-107-02 & -04	2
		71-108-02 & -04	2
		71-109-02 & -04	2
		71-207-02 & -04	4
		71-208-02 & -04	4
		71-209-02 & -04	4
		71-307-02 & -04	6
		71-308-02 & -04	6
	71-309-02 & -04	6	
7	229508-001	Manifold Motor, Clockwise Rotation	1
8	229508-002	Manifold Motor, Counter-Clockwise Rotation	1
9	126403-001	Manifold Motor Mtg. Plate Assy.	2
10	221087-008	Manifold Motor Drive Arm Assy.	2
11	227189-001	Manifold Drive Top Connecting Link	2
12		Manifold Drive Main Link:	
	227188-001	2 Cell High Unit	2
	227188-002	3 Cell High Unit	2
13	221101-002	Bushing 5/8 Manifold Linkage	2

**WATER WASH SYSTEM CONTINUED**

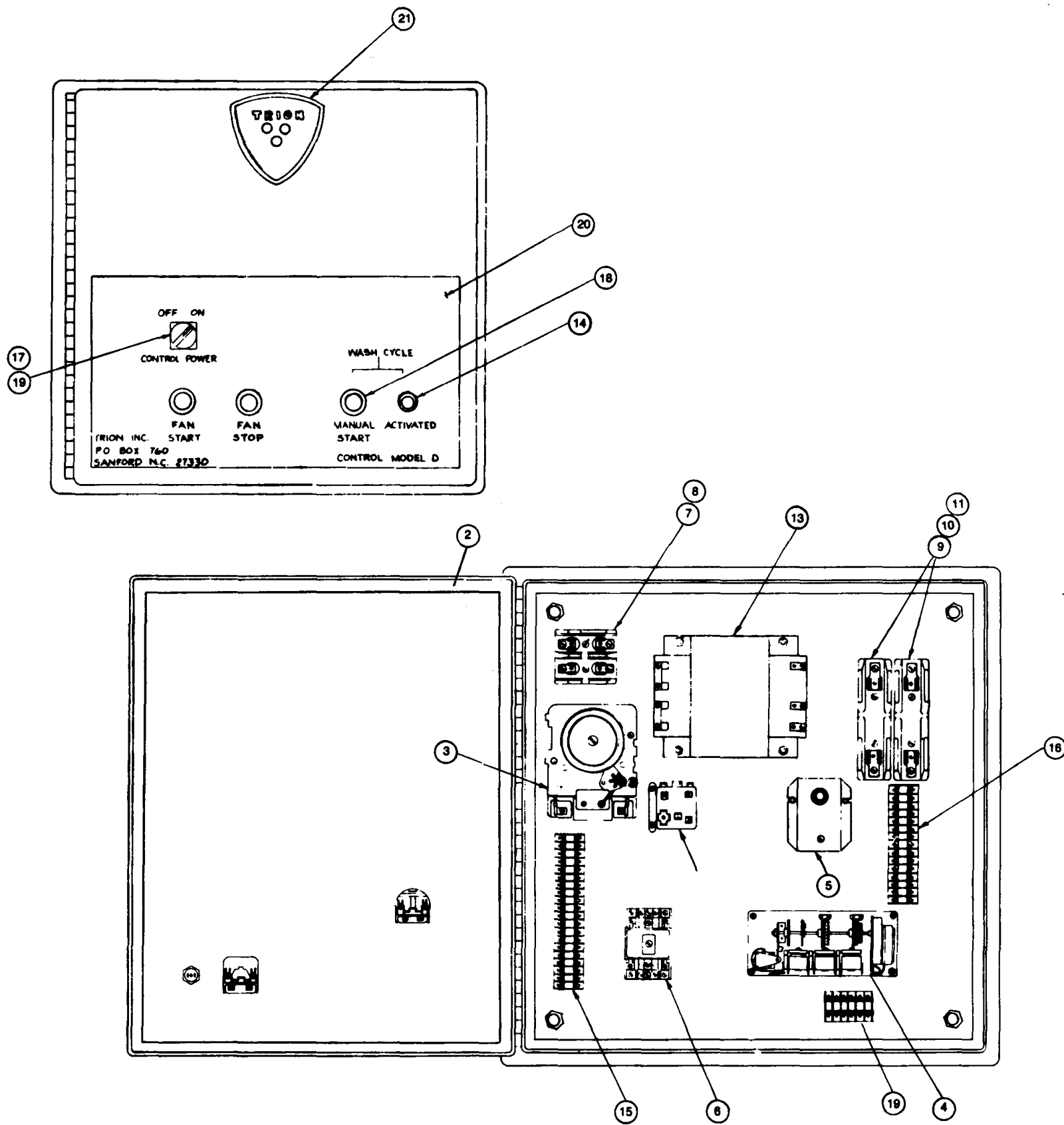
KEY	PART NUMBER	PART DESCRIPTION	QTY./UNIT
14	221101-001	Bushing $\frac{7}{16}$ Manifold Linkage: 1 Cell High Units, 71-102-02 & -04 Thru 71-109-02 & -04 2 Cell High Units, 71-203-02 & -04 Thru 71-209-02 & -04 3 Cell High Units, 71-303-02 & -04 Thru 71-309-02 & -04	2 4 6
15	120456-007	Nylon Spacer Washer, Manifold Linkage 1 Cell High Units 2 Cell High Units 3 Cell High Units	18 26 32
16		Detergent Feeder Assembly (See Detergent Feeder Assembly Parts List for Part Number)	1
17	238596-005	Solenoid Valve, 1 $\frac{1}{4}$ " (Wash Water Supply)	1
18	125766-001	Strainer, 1 $\frac{1}{4}$ " (Wash Water Supply)	1
19	121026-006	Vacuum Breaker, 1 $\frac{1}{4}$ " (Wash Water Supply)	1



1. DETERGENT FEEDER ASSEMBLY

# DETERGENT FEEDER ASSEMBLY

KEY	PART NUMBER	PART DESCRIPTION	QTY./UNIT
1		Detergent Feeder Assembly—Complete (Includes Items 2 Thru 10)	1
	437702-001	16 gal. capacity	
	437702-002	30 gal. capacity	
	437702-003	55 gal. capacity	
2		Stand Assembly	1
	320983-002	16 gal.	
	320983-007	30 gal.	
	320983-008	55 gal.	
3		Tank (Does Not Include lid—Item #4)	1
	329267-001	16 gal.	
	329267-002	30 gal.	
	329267-003	55 gal.	
4		Tank Lid	1
	121019-003	16 gal.	
	121019-004	30 gal.	
	121019-005	55 gal.	
5	129797-001	Strainer	1
6		Check Valve	
	121021-003	16 and 30 Gallon Detergent Feeder	1
	121021-004	55 Gallon Detergent Feeder	1
7	125476-001	Control Valve	1
8		Pump/Motor Assembly (Includes Items 9 & 10)	1
	435608-001	3/8 Pump w/1/3 HP Motor, 16 and 30 Gallon Detergent Feeder 1/2 Pump w/3/4 HP Motor, 55 Gallon Detergent Feeder *Not available as assembly—must be ordered as individual items 9 & 10.	
9		Pump	1
	435608-101	3/8 Pump	
	335612-001	1/2 Pump	
10		Pump Motor	1
	435608-107	1/2 HP, 115V Motor	
	129490-001	3/4 HP, 115V Motor	



1. CONTROL "D" COMPLETE

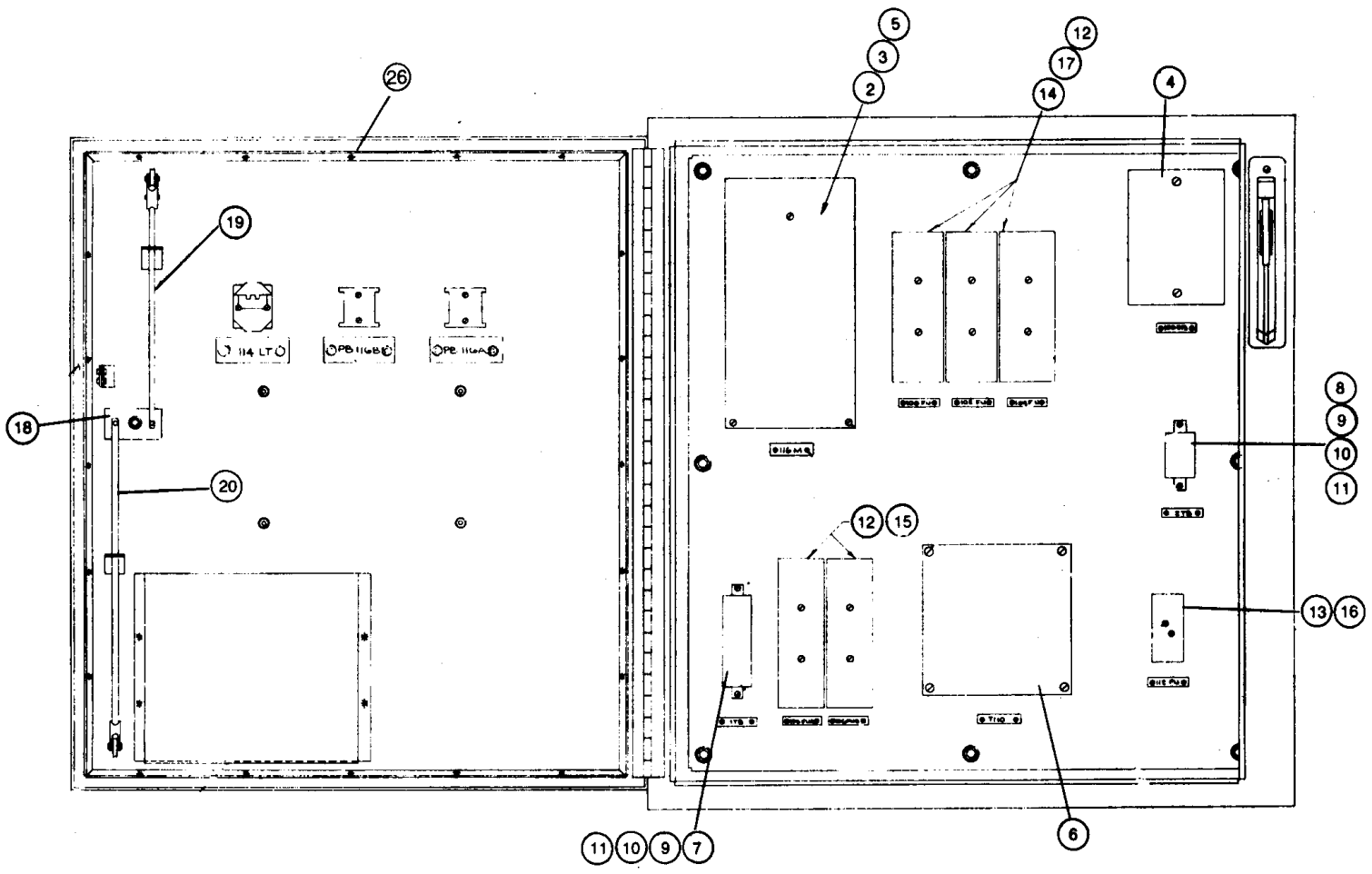
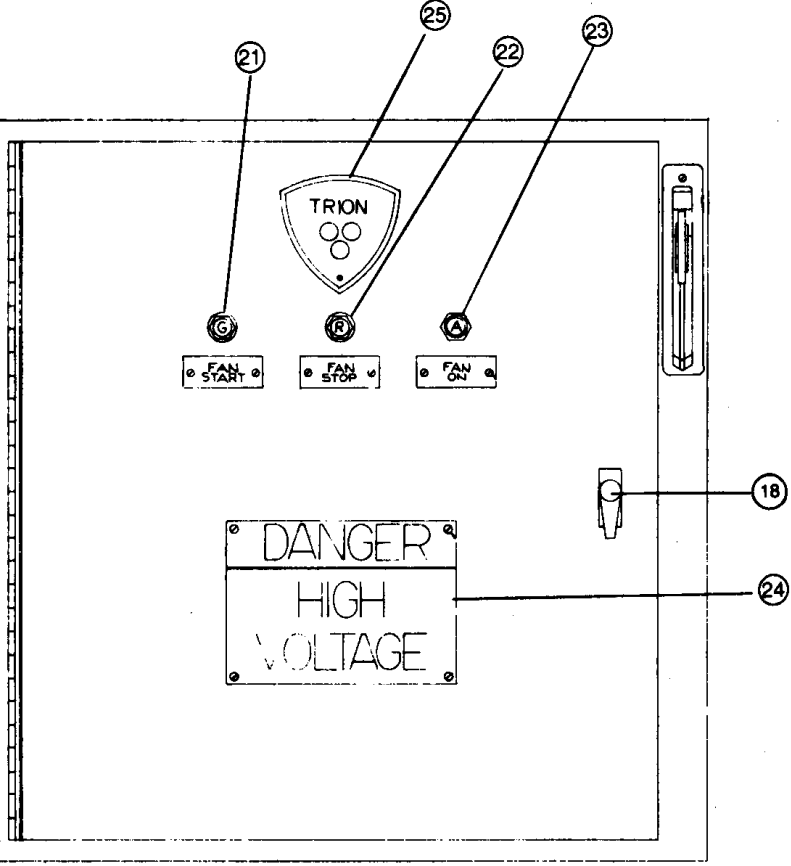
# CONTROL "D", MODEL 71-XXX-02

KEY	PART NUMBER	PART DESCRIPTION	QTY./UNIT
1		Control "D" Complete If a Complete Control "D" is Required Consult Trion Factory for Part Number.	
2	220062-048	Gasket	8
3	125086-001	Automatic Time Clock	1
4	129629-004	Timer, Multi-Cam, Includes Items No. 22 and 23 Below	1
5	120362-007	Relay, Time delay, 1.2-120 sec.	1
6	325753-001	Relay, Control	1
7	222924-001	Fuse Block	1
8	122925-005	Fuse, 12A, 250V Controls w/230/460:115V Stepdown Transformer All other controls	2 1
9	222924-003	Fuse Block .Used only on controls w/230/460:115V Stepdown Transformer	2
10	122926-003	Fuse, 6.25 AMP, 600V Used only on contols w/230/460:115V Stepdown Transformer wired for 230 Volt input and units employing a 1/3 HP Detergent Pump Motor or for Stepdown Transformer wired for 460 Volt input employing either a 1/3 or 3/4 HP Detergent Pump Motor.	2
11	122926-001	Fuse, 10 AMP, 600V Used only on controls with 230/460:115V Stepdown Transformer wired for 230 Volt input and units employing a 3/4 HP Detergent Pump Motor	2
12	229538-002	Detergent Pump Contactor	1
13	228312-002	Stepdown Transformer, 2KVA 230/460: 115 Volt 60 HZ	1
14	125756-001	Light, Amber	1
15	321233-018	Terminal Board, 20 Terminals	1
16	321233-013	Terminal Board, 15 Terminals	1
17	222641-001	On-Off Selector Switch	1
18	125758-001	Manual Start Push Button Switch	1
19	321233-004	Terminal Board, 6 Terminals	1
20	327310-001	Front Label	1
21	220404-001	Label, Trion Shield	1
22	129629-301	Switch for Cam Timer, Item No. 4	5
23	129629-202	Motor for Cam Timer, Item No. 4 Above	1



# CONTROL "D1", MODEL 71-XXX-04

KEY	PART NUMBER	PART DESCRIPTION	QTY./UNIT
1		Control "D1" Complete	1
		If a Complete "D1" is Required, Consult Trion Factory for Part Number	
2		Motor Starter (Motor Start Requires Items No. 3 and 5 Below to be Operational)	
	231728-002	Nema "0", 5 H.P. Maximum @ 480 VAC, 3 PH.	1
	231728-003	Nema "1", 10 H.P. Maximum @ 480 VAC, 3 PH.	1
	231728-004	Nema "2", 25 H.P. Maximum @ 480 VAC, 3 PH.	1
	231728-005	Nema "3", 50 H.P. Maximum @ 480 VAC, 3 PH.	1
3		Heater Elements for Motor Starter Item No. 2 Above	
	231729-036	45 W, Used for 3 H.P. Fan Motor	3
	231729-041	50 W, Used for 5 H.P. Fan Motor	3
	231729-045	54 W, Used for 7.5 H.P. Fan Motor	3
	231729-047	56 W, Used for 10 H.P. Fan Motor	3
	231729-052	61 W, Used for 15 H.P. Fan Motor	3
	231729-055	64 W, Used for 20 H.P. Fan Motor	3
	231729-058	67 W, Used for 25 H.P. or 30 H.P. Fan Motor	3
4		Disconnect Switch, Operating Mechanism Included Except for Tie Rod and Tie Rod Spacer Listed Below	
	225971-004	30 AMP, 15 H.P. or Less Fan Motor	1
	225971-003	60 AMP, 20 H.P., 25 H.P. or 30 H.P. Fan Motor	1
5	123091-001	Auxillary Motor Starter Contact	1
6		Stepdown Transformer	
	231331-003	2 KVA	1
	231331-004	3 KVA	1
7	129629-004	Cam Timer, Includes Items No. 8 and 9	1
8	129629-301	Switch, for Cam Timer Item No. 7 Above	5
9	129629-202	Motor for Cam Timer Item No. 7 Above	1
10	125086-002	Automatic Time Clock, 7-Day	1
11	120362-007	Detergent Timer 1.2-120 SEC.	1
12	331608-001	Detergent Pump Contactor	1
13	331379-002	Fan Control Relay	1
14	222924-003	Fuse Block, 1 Pole, 1-30 AMP, 600V 15 H.P. or Less Fan Motor	5
		20 H.P., 25 H.P., or 30 H.P. Fan Motor	2
15	222924-003	Fuse Block, 1 Pole, 31-60 AMP, 600V 20 H.P., 25 H.P., or 30 H.P. Fan Motor	3
16	222924-004	Fuse Block, 1 Pole, 1-30 AMP, 250V	2
17		Fuses, FRS 600 VAC	
	122926-013	8 AMP, 600 VAC, for 3 H.P. Fan Motor	3
	122926-007	12 AMP, 600 VAC, for 5 H.P. Fan Motor	3
	122926-006	15 AMP, 600 VAC, for 7.5 H.P. Fan Motor	3
	122926-004	20 AMP, 600 VAC, for 10 H.P. Fan Motor	3
	122926-005	30 AMP, 600 VAC, for 15 H.P. Fan Motor	3
	122926-014	40 AMP, 600 VAC for 20 H.P. Fan Motor	3
	122926-015	50 AMP, 600 VAC for 25 H.P. Fan Motor	3
	122926-016	60 AMP, 600 VAC for 30 H.P. Fan Motor	3
18		Fuses, FRS, 600 VAC	
	122926-012	4.5 AMP, 250 VAC, for 2 KVA Stepdown Transformer	2
	122926-003	6.25 AMP, 250 VAC, for 3 KVA Stepdown Transformer	2
19		Fuses, FRN, 250 VAC	
	122925-001	10 AMP, 250 VAC, for 1/3 H.P. Detergent Pump	1
	122925-013	20 AMP, 250 VAC, for 3/4 H.P. Detergent Pump	1
20	122925-006	Fuse, FRN, 250 VAC, 15 AMP	1
21	131122-006	Fuse, FNA, 250 VAC, 2 AMP	2
22	131120-001	Terminal Block Fuse Mount	2
23	131121-001	Terminal Block Fuse Puller	2
24	321231-150	Terminal Block Mounting Channel, 30 Terminals	1
25	321231-118	Terminal Block Mounting Channel, 20 Terminals	1
26	321231-110	Terminal Block Mounting Channel, 12 Terminals	1
27	121222-001	Terminal Block	62
28	121224-001	Terminal Block End Barrier	3
29	121225-001	Terminal Block Retaining Clip	6
30	227760-001	Pilot Light, Amber, "Fan Running"	1
31	227760-005	Pilot Light, Green, "Wash In Process"	1
32	321700-040	Push Button Switch, Red, "Fan Stop"	1
33	321700-041	Push Button Switch, Green, "Fan Start"	1
34	321700-042	Push Button Switch, Black, "Wash Start"	1
35	131035-002	Door Gasket	1
36	226191-003	Door Latching Mechanism, Complete except for Locking Bars Listed Below	1
37	220494-001	Label, Trion Shield	1
38	126489-001	Warning Label, High Voltage	2
NS	231773-016	Door Locking Bar, Upper	1
NS	231773-017	Door Locking Bar, Lower	1
NS	131775-001	Disconnect Switch Tie Rod	1
NS	131776-001	Disconnect Switch Tie Rod Spacer	1
NS	131122-006	Fuse, 2 Amp.	

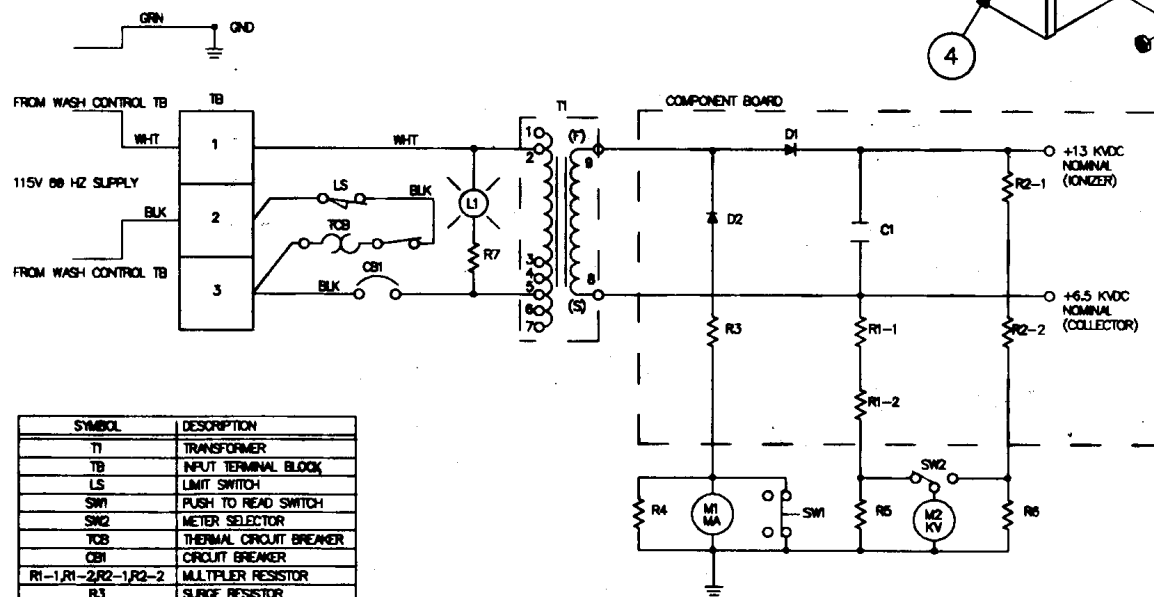
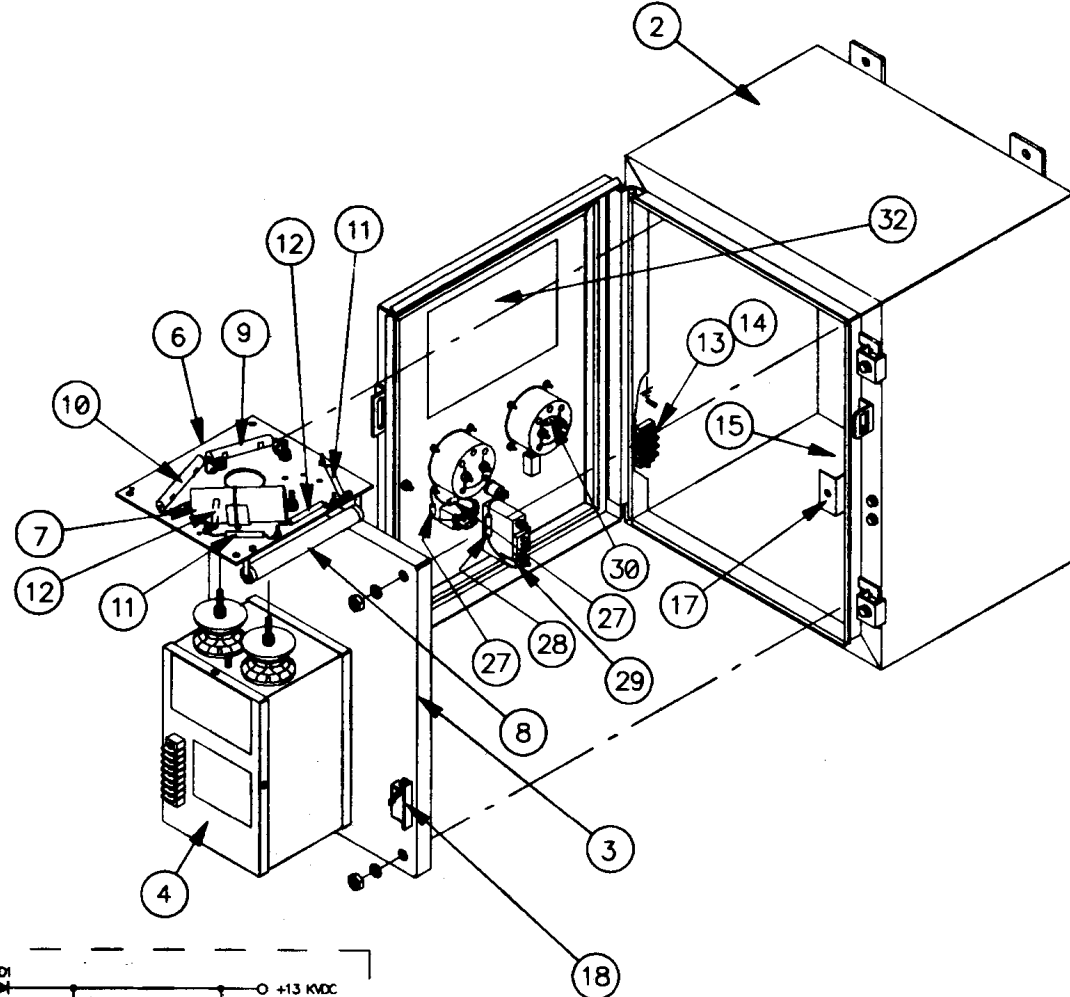
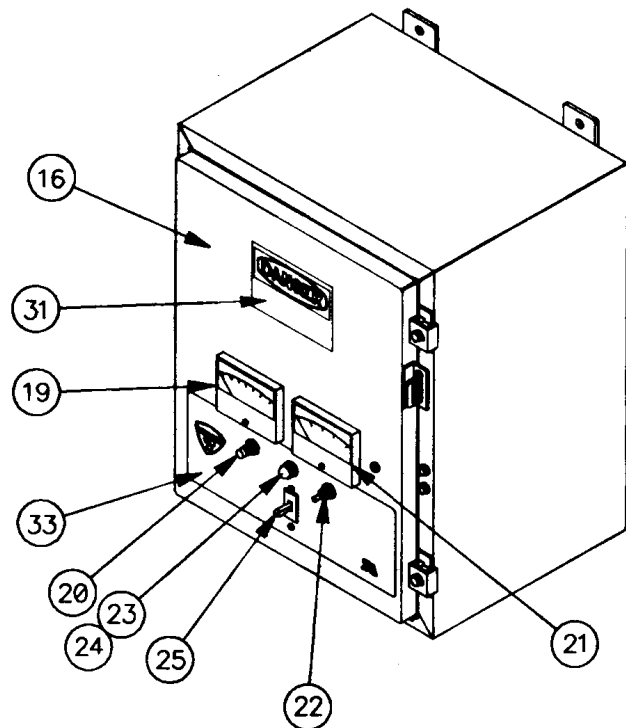


1 CONTROL "D2" COMPLETE

# CONTROL "D2" MODEL 71-XXX-03

KEY	PART NUMBER	PART DESCRIPTION	QTY./UNIT
1		Control "D2" Complete If a Complete Control "D2" is Required, Consult Trion Factory for Part Number.	1
2		Motor Starter, (Motor Starter Requires Items No. 3 and 5 Below to be Operational)	
	231728-002	Nema "0", 5 H.P. Maximum @ 480VAC, 3 PH.	1
	231728-003	Nema "1", 10 H.P. Maximum @ 480 VAC, 3 PH.	1
	231728-004	Nema "2", 25 H.P. Maximum @ 480 VAC, 3 PH.	1
	231728-005	Nema "3", 50 H.P. Maximum @ 480 VAC, 3 PH.	1
3		Heater Elements for Motor Starter Item No. 2 Above	
	231729-036	45 WATT, Used for 3 H.P. Fan Motor	3
	231729-041	50 WATT, Used for 5 H.P. Fan Motor	3
	231729-045	54 WATT, Used for 7.5 H.P. Fan Motor	3
	231729-047	56 WATT, Used for 10 H.P. Fan Motor	3
	231729-052	61 WATT, Used for 15 H.P. Fan Motor	3
	231729-055	64 WATT, Used for 20 H.P. Fan Motor	3
	231729-058	67 WATT, Used for 25 H.P. or 30 H.P. Fan Motor	3
4		Disconnect Switch (100 DIS)	
	225971-004	30 AMP, 15 H.P. or Less Fan Motor	1
	225971-003	60 AMP, 20 H.P., 25 H.P. or 30 H.P. Fan Motor	1
5	123091-001	Auxilliary Contact for Motor Starter, Item No. 2 Above	1
6	231331-003	Stepdown Transformer, 2KVA, (T110)	1
7	321231-110	Terminal Block Mounting Channel, 12 Terminals, (1TB)	1
8	321231-104	Terminal Block Mounting Channel, 6 Terminals (2TB)	1
9	121222-001	Terminal Block for Items No. 7 and 8 Above	18
10	121224-001	End Barrier for Items No. 7 and 8 Above	2
11	121225-001	Retaining Clips for Items No. 7 and 8 Above	4
12	222924-003	Fuse Blocks, 1 Pole, 1-30 AMP, 600V 15 H.P. or Less Fan Motor	5
		20 H.P., 25 H.P. or 30 H.P. Fan Motor	2
13	222924-004	Fuse Block, 1 Pole, 1-30 AMP, 250V	1
14	222924-008	Fuse Block, 1 Pole, 31-60 AMP, 600V 20 H.P., 25 H.P. or 30 H.P. Fan Motor	3
15	112926-003	Fuse, 6.25 AMP	2
16	122925-006	Fuse, 15 AMP	1
17		Fuses	
	122926-013	Fuse, 8 AMP, 3 H.P. Fan Motor	3
	122926-007	Fuse, 12 AMP, 5 H.P. Fan Motor	3
	122926-006	Fuse, 15 AMP, 7.5 H.P. Fan Motor	3
	122926-004	Fuse, 20 AMP, 10 H.P. Fan Motor	3
	122926-005	Fuse, 30 AMP, 15 H.P. Fan Motor	3
	122926-014	Fuse, 40 AMP, 20 H.P. Fan Motor	3
	122926-015	Fuse, 50 AMP, 25 H.P. Fan Motor	3
	122926-016	Fuse, 60 AMP, 30 H.P. Fan Motor	3
18	226191-003	Door Latching Mechanism	1
19	231773-026	Door Latching Bar, Top	1
20	231773-027	Door Latching Bar, Bottom	1
21	321700-041	Push Button, Fan Start, Green	1
22	321700-040	Push Button, Fan Stop, Red	1
23	227760-001	Light, Fan On, Amber	1
24	126489-001	Warning Label, High Voltage	1
25	220494-001	Label, Trion Shield	1
26	131035-012	Door Gasket	1
Not Shown	131775-001	Disconnect Switch Tie Rod 30 AMP Disconnect 60 AMP Disconnect	1 1 2
Not Shown	131775-001	Disconnect Switch Spacer 30 AMP Disconnect 60 AMP Disconnect	1 1 2

1. POWER PACK, TYPE "E"



SYMBOL	DESCRIPTION
T1	TRANSFORMER
TB	INPUT TERMINAL BLOCK
LS	LIMIT SWITCH
SW1	PUSH TO READ SWITCH
SW2	METER SELECTOR
TCB	THERMAL CIRCUIT BREAKER
CB1	CIRCUIT BREAKER
R1-1, R1-2, R2-1, R2-2	MULTIPLIER RESISTOR
R3	SURGE RESISTOR
R4	BYPASS RESISTOR
R5, R6	DIVIDER RESISTOR
R7	CURRENT LIMITING RESISTOR
M1	MILLIAMMETER
M2	KILOVOLT METER
C1	CAPACITOR
L1	PILOT LIGHT
D1, D2	RECTIFIER

SCHEMATIC

# POWER PACK, TYPE "E"

KEY	PART NUMBER	PART DESCRIPTION	QTY./CELL
1	429492-004	Power Pack Assembly, Complete (Includes Items 3 thru 35)	1
2	430659-001	Enclosure, Nema 12 (Housing Only)	1
3	325387-001	Chassis Panel Plate	1
4	427051-001	High Voltage Transformer	1
5	334243-001	Secondary Component Board Assembly, Complete (Includes Items 7 thru 13)	1
6	234242-001	Insulation Board	1
7	122871-001	Capacitor Assembly, 10 KVDC, .03 MFD, C1	1
8	221347-025	Resistor, 20K, 100W, R3	1
9	223039-009	Rectifier Assembly, 350 MA, 30 KV, D2	1
10	223039-008	Rectifier Assembly, 350 MA, 30 KV, D1	1
11	225352-001	Resistor Assembly, 100 MEG, 2W, 10KV, R1-2, R2-2	2
12	225352-002	Resistor Assembly, 100 MEG, 2W, 10KV, R1-1, R2-1	2
13	221442-003	Terminal Board, TB	1
14	221443-003	Marker Strip	1
15	120313-001	Access Door Electrical Interlock Switch, LS	1
16	131515-001	Safety Screw	1
17	225294-001	Bracket Assembly, Safety Switch	1
18	228748-013	Thermal Circuit Breaker, 2 AMP, TCB	1
19	235424-001	MA Meter	1
20	120369-003	Push Switch	1
21	235425-001	KV Meter	1
22	120370-004	Toggle Switch	1
23	123463-003	Lamp Holder, L1	1
24	121576-002	Lamp, L1	1
25	230495-005	Magnetic Circuit Breaker 3.5 AMP, CB1	1
26	129499-003	Resistor Assembly, 100K, 1W, R6	1
27	129499-002	Resistor Assembly, 1 MEG, 1W, R5	1
28	220930-099	Resistor, 3.3K, 1W, R7	1
29	128434-001	Resistor Mounting Bracket	1
30	220930-103	Resistor 47K, 1W, R4	1
31	121390-001	Warning Label	1
32	229030-001	Label, Wiring Schematic	1
33	325819-002	Label	1
Not Shown	121117-003	High Voltage Lead, Blue, (Per foot)	As Req.
Not Shown	121117-001	High Voltage Lead, Black, (Per foot)	As Req.

**NOTE:**

Prior to the Power Pack, TYPE "E" recognized by Underwriters Laboratories (UL), Trion, Inc. Power Pack TYPE "E" was not recognized by UL. Power Packs can be distinguished by the following:

**UL RECOGNIZED**

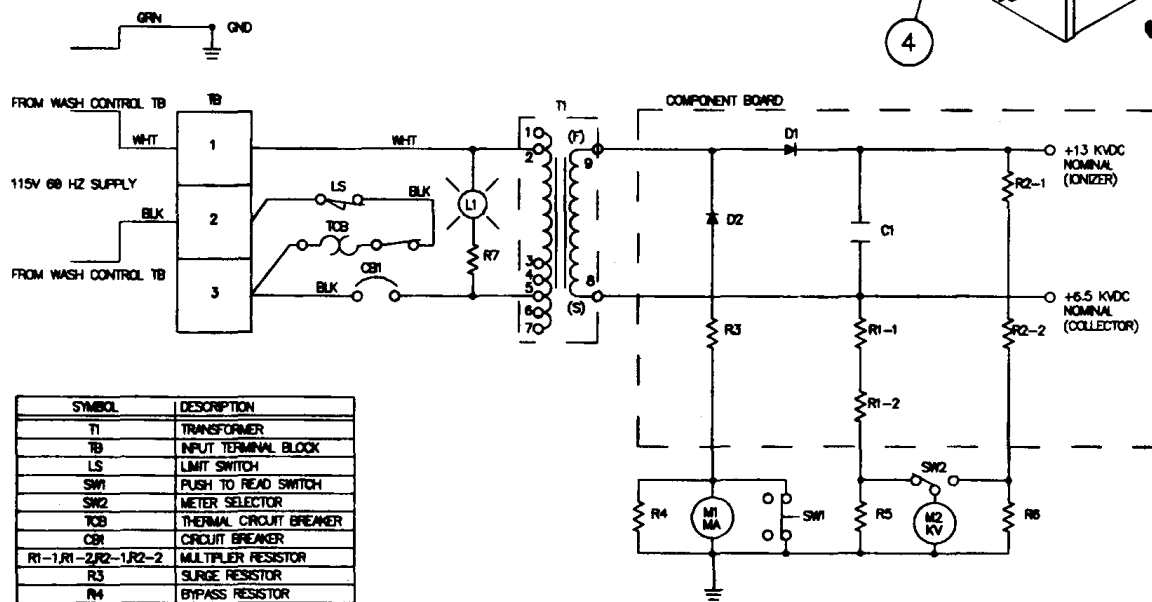
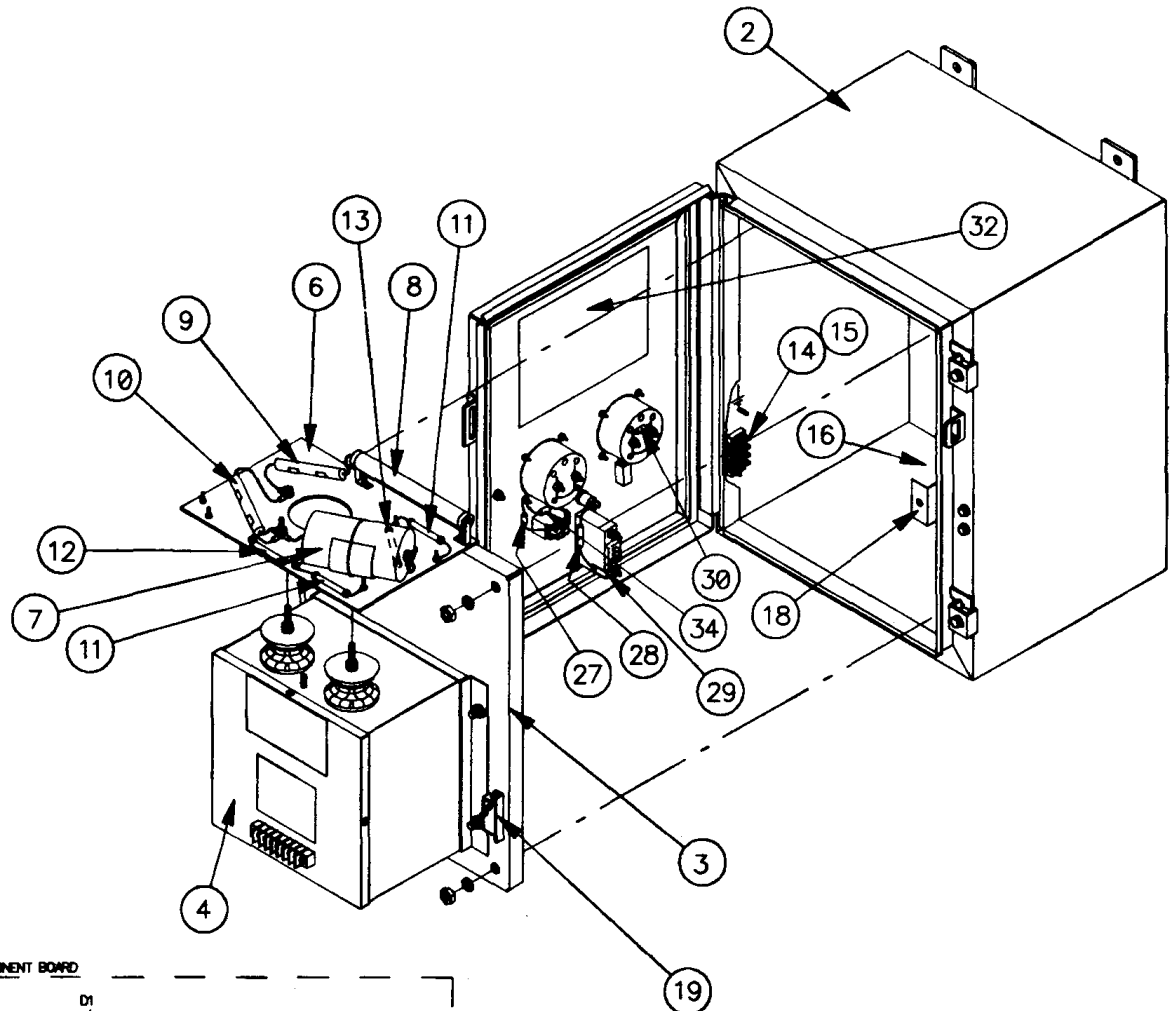
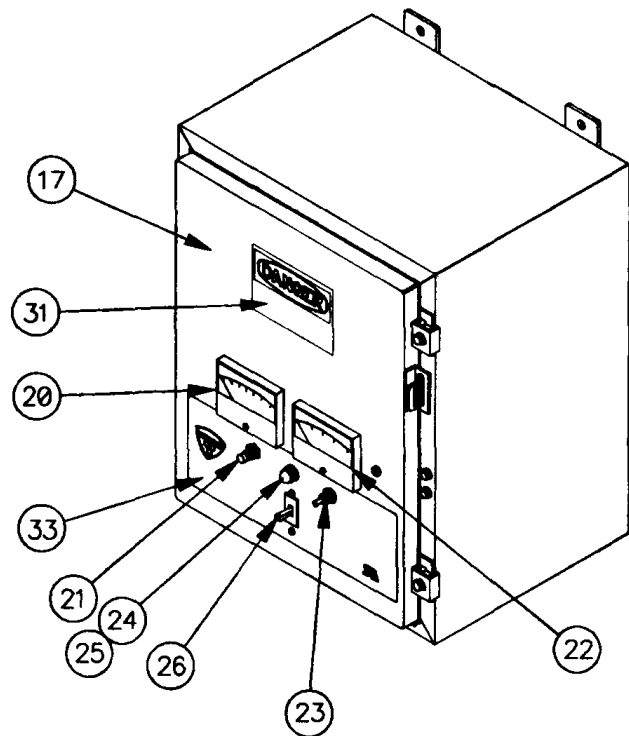
1. Displays UL recognized trademark shown above.
2. All components of the secondary component board are mounted on top surface of red insulation board.
3. Incorporates API Panel meters.

**NON-UL RECOGNIZED**

1. Does not display the UL recognized trademark shown above.
2. The surge resistor, 20K OHM, 100W, R3, is mounted on bottom surface of red insulation board.
3. Incorporates GE Panel meters.

The following parts are replacements for the non-UL recognized Power Pack, TYPE "E". If a required replacement part is not listed below, the part is interchangeable with parts of the UL recognized Power Pack above.

6	325454-001	Secondary Component Board Assembly	
7	222865-001	Insulation Board	
10	223039-002	Rectifier Assembly, 350 MA, 30 KV, D2	
11	223039-001	Rectifier Assembly, 350 MA, 30 KV, D1	



7.5 Amp

SYMBOL	DESCRIPTION
T1	TRANSFORMER
TB	INPUT TERMINAL BLOCK
LS	LIMIT SWITCH
SW1	PUSH TO READ SWITCH
SW2	METER SELECTOR
TCB	THERMAL CIRCUIT BREAKER
CBR	CIRCUIT BREAKER
R1-1, R1-2, R2-1, R2-2	MULTIPLIER RESISTOR
R3	SLURGE RESISTOR
R4	BYPASS RESISTOR
R5, R6	DIVIDER RESISTOR
R7	CURRENT LIMITING RESISTOR
M1	MILLIAMMETER
M2	KILOVOLT METER
C1	CAPACITOR
L1	PILOT LIGHT
D1, D2	RECTIFIER

SCHEMATIC

# POWER PACK, TYPE "F"

UNDERWRITERS LABORATORIES RECOGNIZED  
SEE NOTE BELOW

KEY	PART NUMBER	PART DESCRIPTION	QTY./CELL
1	429506-004	Power Pack Assembly, Complete (Includes Items 3 thru 36)	1
2	430659-001	Enclosure, Nema 12 (Housing Only)	1
3	225273-002	Chassis Panel Plate	1
4	431358-001	High Voltage Transformer, T1	1
5	434195-001	Secondary Component Board Assembly, Complete (Includes Items 7 thru 14)	
6	234204-001	Insulation Board	1
7	231464-012	Capacitor, 15 KVDC, .05 MFD, C1	1
8	221347-025	Resistor, 20K, 100W, R3	1
9 -	223039-005	Rectifier Assembly, 350 MA, 30 KV, D2	1
10 ←	223039-002	Rectifier Assembly, 350 MA, 30 KV, D1	1
11	225352-001	Resistor Assembly, 100 MEG, 2W, 10KV, R1-2, R2-2	2
12	225352-002	Resistor Assembly, 100 MEG, 2W, 10KV, R2-1,	1
13	225352-007	Resistor Assembly, 100 MEG, 2W, 10KV, R1-1	1
14	221442-003	Terminal Board, TB	1
15	221443-003	Marker Strip	1
16	120313-001	Access Door Electrical Interlock Switch, LS	1
17	131515-001	Safety Screw	1
18	225294-001	Bracket Assembly, Safety Switch	1
19	228748-017	Thermal Circuit Breaker, 4 AMP, TCB	1
20	235424-001	MA Meter, MA	1
21	120369-003	Push Switch, SW1	1
22	235425-001	KV Meter, KV	1
23	120370-004	Toggle Switch, SW2	1
24	123463-003	Lamp Holder, L1	1
25	121576-002	Lamp, L1	1
26	230495-007	Magnetic Circuit Breaker 7.5 AMP, CB1	1
27	129499-003	Resistor Assembly, 100K, 1W, R6	1
28	220930-099	Resistor, 33K, 1W, R7	1
29	128434-001	Resistor Mounting Bracket	1
30	220930-103	Resistor, 47K, 1W, R4	1
31	121390-001	Warning Label	1
32	229030-001	Label, Wiring Schematic	1
33	325819-002	Label, Data Plate	1
34	129499-002	Resistor, 1 MEG, 1W, R5	
Not Shown	121117-003	High Voltage Lead, Blue, (Per foot)	As Req.
Not Shown	121117-001	High Voltage Lead, Black, (Per foot)	As Req.

**NOTE:**

Prior to the Power Pack, TYPE "F" recognized by Underwriters Laboratories (UL), Trion, Inc. Power Pack TYPE "F" was not recognized by UL. Power Packs can be distinguished by the following:

**UL RECOGNIZED**

1. Displays UL recognized trademark shown above.
2. All components of the secondary component board are mounted on top surface of red insulation board.
3. Incorporates API Panel meters.

**NON-UL RECOGNIZED**

1. Does not display the UL recognized trademark shown above.
2. The surge resistor, 20K OHM, 100W, R3, is mounted on bottom surface of red insulation board.
3. Incorporates GE Panel meters.

The following parts are replacements for the non-UL recognized Power Pack, TYPE "F". If a required replacement part is not listed below, the part is interchangeable with parts of the UL recognized Power Pack above.

6	225351-001	Secondary Component Board Assembly
7	223043-001	Insulation Board
10	223039-001	Rectifier Assembly, 350 MA, 30 KV, D2
11	223039-002	Rectifier Assembly, 350 MA, 30 KV, D1

**TRION** Inc.

ENGINEERED SOLUTIONS FOR CLEAN AIR

P.O. Box 760 • 101 McNeill Road • Sanford, NC 27331-0760 • 1-800-227-3917 • (919) 775-2201 • FAX (919) 774-8771

Form No. 65-0146 • © 1995, Trion Inc. • 2/95

TRION INC., having a policy of continuous product improvement, reserves the right to make changes in design and specification without notice.