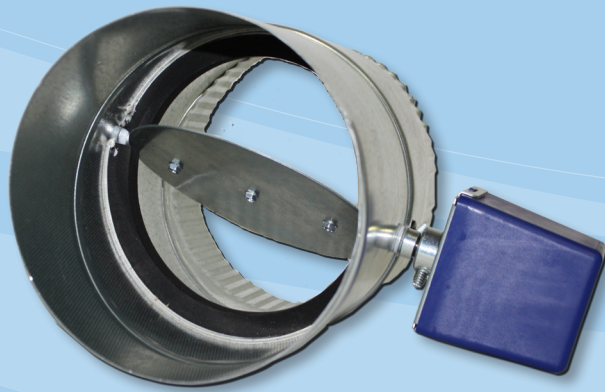


# TMD520

## Whole-House Motorized Air Damper



### PRODUCT DATA SHEET



#### Overview:

TRION® model TMD520 is a ventilation control system solution for residential applications up to 4,600 square feet. The system introduces outdoor ventilation air into the building envelope through an intake damper that is controlled by the microprocessor based ventilation control interface. The system controls the amount of outdoor ventilation air as required by the Ventilation and Air Quality Standard defined in ASHRAE 62.2, promoting healthier indoor air quality.

#### Features:

- Adjustable damper position range stops
- Single-blade damper
- Galvanized steel
- Shipped as power open/spring closed
- Can be field-converted to power close/spring open
- Blade closes off tightly against gasket for minimal leakage
- Rated to operate up to 1 in. wc
- Male (crimped) and female (uncrimped) ends to connect to any rigid or flexible round duct
- Actuator bears CE mark

#### Applications:

- Apartments complexes
- Condominiums
- Single family residences
- Light commercial

#### Benefits:

- Helps satisfy ventilation codes and standard ASHRAE 62.2
- Controls allow application specific ventilation set points
- Promotes healthier Indoor Air Quality (IAQ)
- Controller optimizes HVAC unit run times
- Exhaust fan control wiring option
- Quick and easy installation and setup

#### Warranty:

- 5-Year Limited Warranty



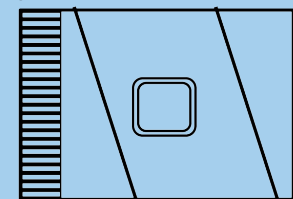
### PRODUCT DATA SHEET

#### TRION® Motorized Damper

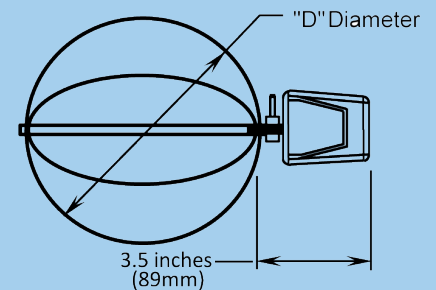
Model	TMD520
Frame	Galvanized steel spiral duct, crimped on downstream side.
Sizes	5 in., 6 in., 8 in., 10 in., 12 in., 14 in., 16 in., 18 in., and 20 in. diameters
Cap Covers	Comes standard in plastic and is available in metal with #6 screws.
Gauges	24 Gauge frame, and 22 Gauge blade. 22 Gauge frame, and 20 Gauge blade.
Motor Electrical Rating	24 VAC, 60 Hz, 6VA
Motor Electrical Connection	4 in. lead wire
Motor Nominal Angular Rotation	90°
Motor Torque	Minimum 60 in.-oz. (423 milli-newton meters) output torque available when motor is energized and device is at the spring return initial start position.
Nominal Motor Timing at 77°F (25°C) Ambient	Energized at rated load: 30 seconds. De-energized (spring return): 10 seconds
Motor Ambient Temperature Rating	40° to 140°F (5° to 60°C)
Leakage	Less than 1% at 1/2 in. wc.
Pressure Drop	Maximum at full open: 0.0329 in. wc at 800 ft/min.
Maximum Static Pressure	1 in. wc for all models except 0.3 in. wc for TMD520.
Motor Shaft Rotation Direction	Clockwise, when energized and viewed from the base or shaft end.
Motor Mounting Means	Multi-poise
Motor Dimensions	See Fig. 2

Dimensions				
	A	B	C	D
in	3.5	2.75	3	*
mm	88.9	69.85	76.2	*

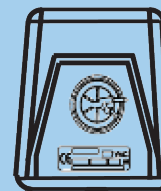
\*Diameter varies, see options to the left. The length is equal to the diameter plus 2 in.



$$L = \text{Diameter} + 2 \text{ inches } (.51\text{mm})$$



$$\leftarrow B \rightarrow$$



Threaded Screw

Set Screw on Rear

The specifications given in this publication do not include normal manufacturing tolerances. Therefore, this unit may not exactly match the listed specifications. Also, this product is tested and calibrated under closely controlled conditions, and some minor differences in performance can be expected if those conditions are changed.

Indoor Air Quality Since 1947.

ISO 9001:2008 Certified.

Industry Memberships:



Proudly Designed,  
Engineered, and  
Manufactured in the USA.\*



\*Manufactured with domestic and foreign components.

To help serve you better,  
please contact us at:

800-884-0002 (tel)

800-458-2379 (fax)

TRION®

101 McNeill Road  
Sanford, NC 27330

[www.trioniaq.com](http://www.trioniaq.com)

[customerservice@trioniaq.com](mailto:customerservice@trioniaq.com)

TRION® is a registered trademark of Air System Components, Inc. Air System Components, Inc. is a subsidiary of Johnson Controls Inc. All product specifications reflect available information at the printing of this brochure. TRION® reserves the right to revise or modify products and/or specifications without notice. © 2015 TRION®