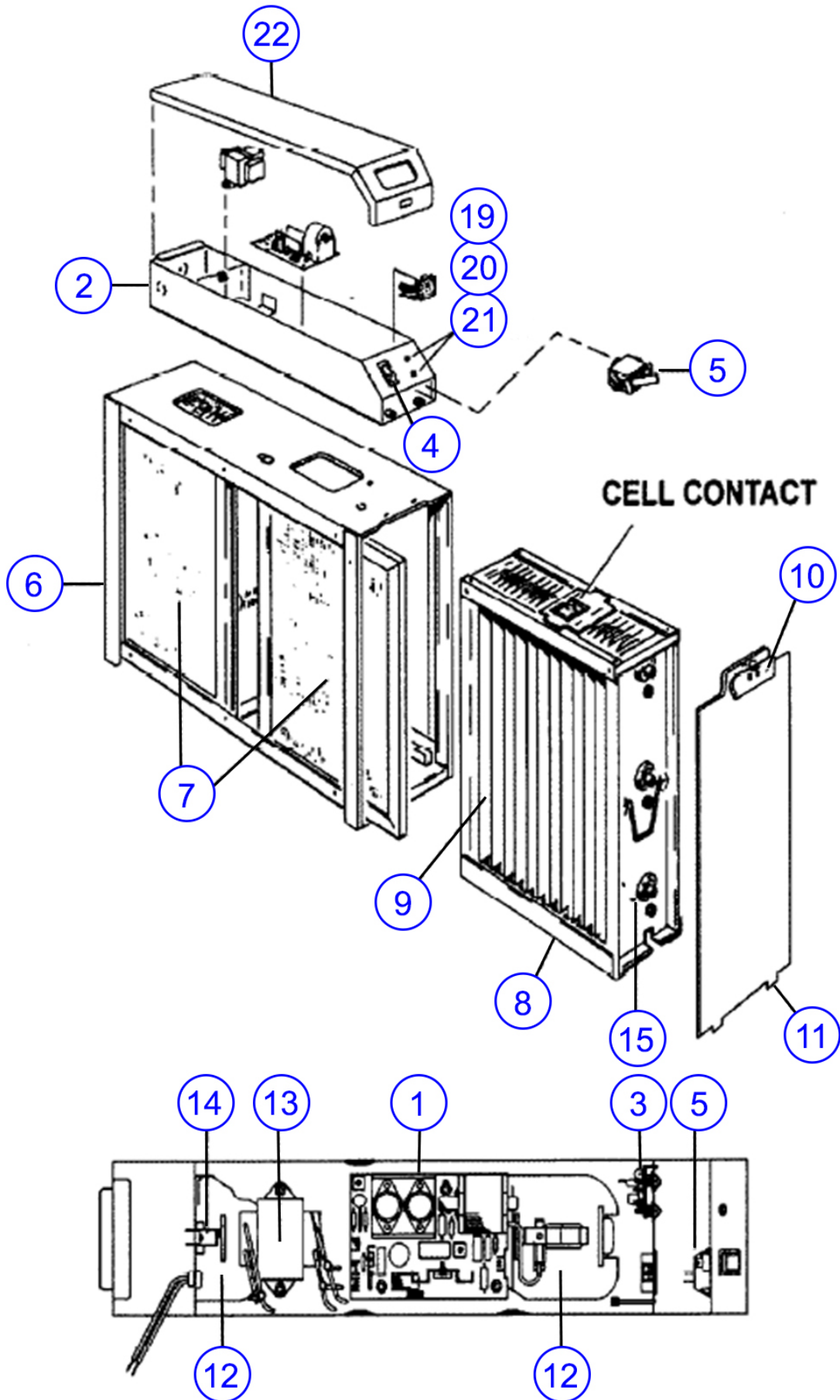


# TRION TRIM TX PARTS LIST



# TRION TRIM TX PARTS LIST

	DESCRIPTION	Trim TX (16" x 25")
1	HIGH FREQUENCY POWER SUPPLY	<a href="#">341677-601B</a>
2	POWER PACK ASSEMBLY (120 VOLT)	<a href="#">441891-042</a>
3	ELECTRONIC AIR FLOW SENSOR KIT	<a href="#">144501-001</a>
4	ON/OFF SWITCH	<a href="#">138586-001</a>
5	SAFETY INTERLOCK SWITCH	<a href="#">244833-001</a>
6	CABINET ASSEMBLY	338751-007
7	PREFILTER (2 REQUIRED)	<a href="#">123324-008</a>
8	CELL IONIZING-COLLECTING	<a href="#">441731-101</a>
9	IONIZING WIRE ASSEMBLY (1 WIRE)	<a href="#">220111-021</a>
10	HANDLE	241831-005
11	ACCESS DOOR	341892-015
12	CONTACT BOARD ASSEMBLY (2 REQUIRED)	<a href="#">345109-001</a>
13	STEP DOWN TRANSFORMER (120V TO 24V)	<a href="#">239071-001</a>
14	GROUND CLIP	<a href="#">138885-001</a>
15	INSULATOR	<a href="#">246287-001</a>
16	PLASTIC POSITIONING SPACER [NOT SHOWN-SEE FIG 5]	<a href="#">143839-001</a>
17	CHARCOAL FILTER (OPTIONAL-NOT SHOWN)	<a href="#">227833-003</a>
18	240V CONVERSION KIT (OPTIONAL-NOT SHOWN)	252453-103
19	OUTPUT VOLTAGE LED ASSEMBLY (RED)	<a href="#">134516-006</a>
20	INPUT VOLTAGE LED ASSEMBLY (GREEN)	<a href="#">134516-007</a>
21	LED MOUNTING CLIP	134513-007
22	POWER PACK COVER	334370-014